

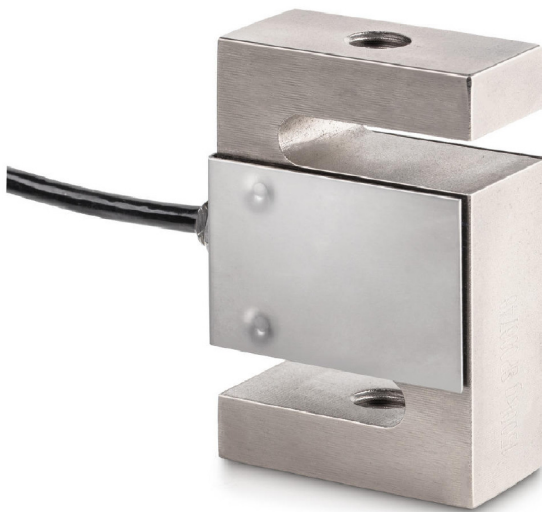
KERN CS7500-3P1

4 wire  measuring cells for force and mass measurement

KERN[®]

Piktogramme

STANDARD



Measuring system

Combined Error:	0,020 %
Load cell connection:	4-wire
Nominal sensitivity:	2
OIML class:	C3
Resolution Load cell  Verifiable:	3000 e
Weighing capacity [Max]:	7,500 t
Y value:	10000

Environmental conditions

Maximum operating temperature:	65 C
Maximum operating temperature:	40 C
Minimum ambient temperature:	-35 C
Minimum operating temperature:	-10 C

Category

Brand:	Sauter
--------	--------

Packaging & shipping

Delivery:	24 h
Dimensions packaging (WxDxH):	320 x 320 x 160 mm
Gross weight:	8,020 kg
Net weight:	6,680 kg
Shipping method:	Parcel service

Construction

Cable length:	6 m
Dimensions (WxDxH):	125 x 175 x 50 mm