

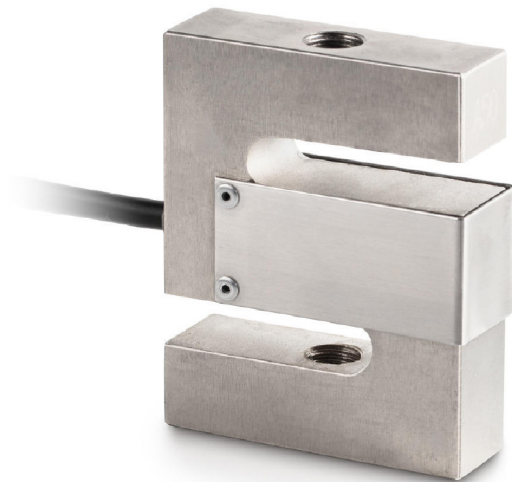
# KERN CS6000-3Q1

6 wire 6-wire measuring cells for force and mass measurement

**KERN**<sup>®</sup>

## Piktogramme

STANDARD



## Measuring system

Combined Error:	0,017 %
Load cell connection:	6-wire
Nominal sensitivity:	2
OIML class:	C3
Resolution Load cell 6 Verifiable:	3000 e
Weighing capacity [Max]:	6 t
Y value:	10000

## Environmental conditions

Maximum operating temperature:	40 °C
Minimum ambient temperature:	-10 °C

## Category

Brand:	Sauter
--------	--------

## Packaging & shipping

Delivery:	24 h
Dimensions packaging (WxDxH):	220 x 135 x 100 mm
Gross weight:	3,481 kg
Net weight:	3,300 kg
Shipping method:	Parcel service

## Construction

Cable length:	5 m
Dimensions (WxDxH):	120 x 100 x 45 mm