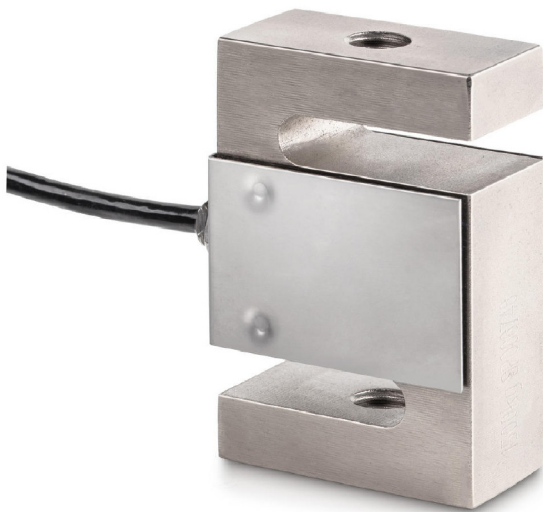


# KERN CS50-3P1

4 wire 4-wire measuring cells for force and mass measurement



## Measuring system

|                                    |         |
|------------------------------------|---------|
| Combined Error:                    | 0,020 % |
| Load cell connection:              | 4-wire  |
| Nominal sensitivity:               | 2       |
| OIML class:                        | C3      |
| Resolution Load cell 4 Verifiable: | 3000 e  |
| Weighing capacity [Max]:           | 50 kg   |
| Y value:                           | 10000   |

## Category

|        |        |
|--------|--------|
| Brand: | Sauter |
|--------|--------|

## Packaging & shipping

|                               |                   |
|-------------------------------|-------------------|
| Delivery:                     | 24 h              |
| Dimensions packaging (WxDxH): | 185 x 155 x 60 mm |
| Gross weight:                 | 685 g             |
| Net weight:                   | 580 g             |
| Shipping method:              | Parcel service    |

## Construction

|                     |                       |
|---------------------|-----------------------|
| Cable length:       | 3 m                   |
| Dimensions (WxDxH): | 50,8 x 76,2 x 14,5 mm |

## Piktogramme

STANDARD

