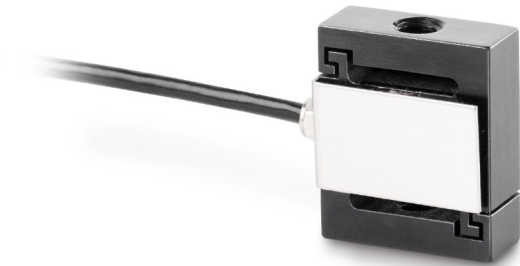


# KERN CS5-Y1

Miniature S measuring cells and S load cells



## Measuring system

Combined Error:	0,050 %
Load cell connection:	4-wire
Nominal sensitivity:	2
Weighing capacity [Max]:	5 kg

## Environmental conditions

Maximum operating temperature:	70 °C
Minimum operating temperature:	-30 °C

## Category

Brand:	Sauter
--------	--------

## Packaging & shipping

Delivery:	24 h
Dimensions packaging (WxDxH):	150 x 105 x 40 mm
Gross weight:	71 g
Net weight:	30 g
Shipping method:	Parcel service

## Construction

Cable length:	2 m
---------------	-----