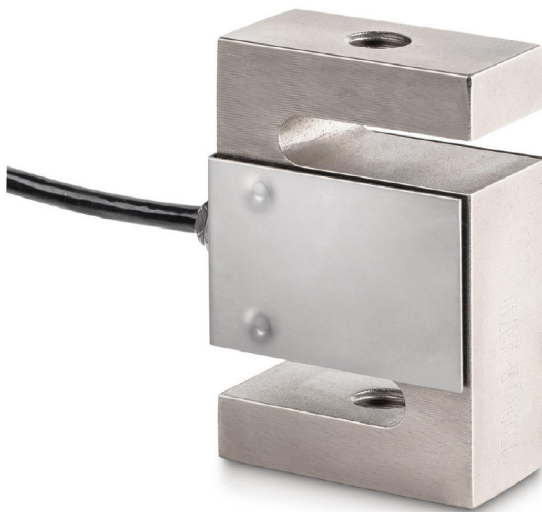


# KERN CS30000-3P1

4 wire 4-wire measuring cells for force and mass measurement

## Piktogramme

STANDARD



### Measuring system

Combined Error:	0,020 %
Load cell connection:	4-wire
Nominal sensitivity:	2
OIML class:	C3
Resolution Load cell 4 Verifiable:	3000 e
Weighing capacity [Max]:	30 t
Y value:	10000

### Environmental conditions

Maximum operating temperature:	65 °C
Maximum operating temperature:	40 °C
Minimum ambient temperature:	-35 °C
Minimum operating temperature:	-10 °C

### Category

Brand:	Sauter
--------	--------

### Packaging & shipping

Delivery:	2712 h
Dimensions packaging (WxDxH):	600 x 600 x 200 mm
Gross weight:	13 kg
Net weight:	12 kg
Shipping method:	Parcel service

### Construction

Cable length:	6 m
Dimensions (WxDxH):	190 x 230 x 80 mm