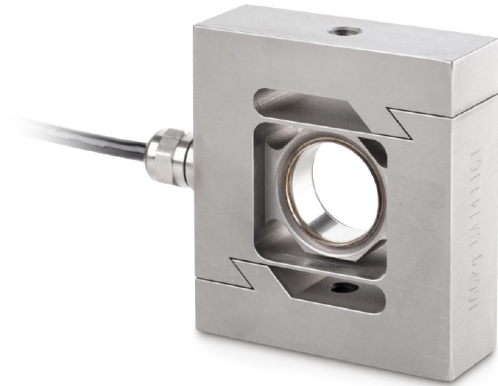


KERN CS250-3P2

S measuring cells and S load cells made from stainless steel



Measuring system

| | |
|------------------------------------|---------|
| Combined Error: | 0,023 % |
| Load cell connection: | 4-wire |
| Nominal sensitivity: | 2 |
| OIML class: | C3 |
| Resolution Load cell â Verifiable: | 3000 e |
| Weighing capacity [Max]: | 250 kg |
| Y value: | 12000 |

Environmental conditions

| | |
|--------------------------------|--------|
| Maximum operating temperature: | 65 °C |
| Maximum operating temperature: | 40 °C |
| Minimum ambient temperature: | -35 °C |
| Minimum operating temperature: | -10 °C |

Category

| | |
|--------|--------|
| Brand: | Sauter |
|--------|--------|

Packaging & shipping

| | |
|-------------------------------|-------------------|
| Delivery: | 24 h |
| Dimensions packaging (WxDxH): | 200 x 180 x 55 mm |
| Gross weight: | 1,072 kg |
| Net weight: | 960 g |
| Shipping method: | Parcel service |

Construction

| | |
|---------------------|-----------------|
| Cable length: | 6 m |
| Dimensions (WxDxH): | 92 x 86 x 50 mm |