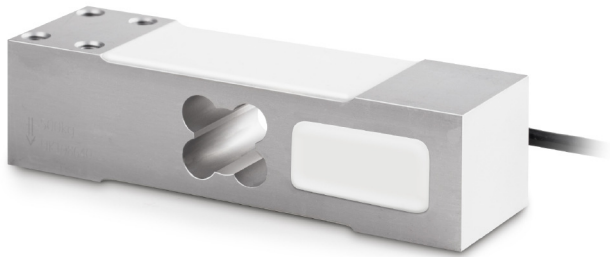


KERN CP400-3P2

Aluminium singlepoint load cell



Measuring system

| | |
|------------------------------------|---------|
| Combined Error: | 0,023 % |
| Load cell connection: | 4-wire |
| Nominal sensitivity: | 2 |
| OIML class: | C3 |
| Resolution Load cell à Verifiable: | 3000 e |
| Weighing capacity [Max]: | 400 kg |
| Y value: | 10000 |

Environmental conditions

| | |
|--------------------------------|--------|
| Maximum operating temperature: | 65 °C |
| Maximum operating temperature: | 40 °C |
| Minimum ambient temperature: | -35 °C |
| Minimum operating temperature: | -10 °C |

Category

| | |
|--------|--------|
| Brand: | Sauter |
|--------|--------|

Packaging & shipping

| | |
|-------------------------------|--------------------|
| Delivery: | 24 h |
| Dimensions packaging (WxDxH): | 160 x 105 x 110 mm |
| Gross weight: | 760 g |
| Net weight: | 706 g |
| Shipping method: | Parcel service |

Construction

| | |
|---------------------------------------|------------------|
| Cable length: | 2 m |
| Dimensions (WxDxH): | 150 x 44 x 40 mm |
| Dimensions of weighing plate (WxDxH): | 450 x 450 x 0 mm |

Piktogramme

STANDARD

