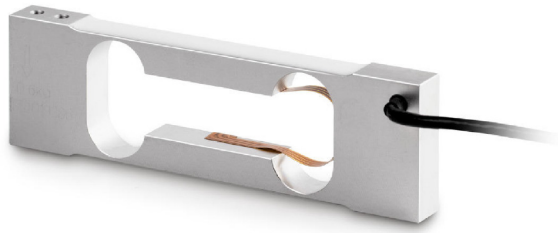


# KERN CP300-0P4

Single-point load cells made of anodised aluminium



## Piktogramme

### STANDARD



### OPTION



### Measuring system

Combined Error:	0,023 %
Load cell connection:	4-wire
Nominal sensitivity:	0,900
OIML class:	C3
Resolution Load cell à Verifiable:	3000 e
Weighing capacity [Max]:	300 g
Y value:	4667

### Environmental conditions

Maximum operating temperature:	50 °C
Maximum operate temperature:	40 °C
Minimum ambient temperature:	-20 °C
Minimum operating temperature:	-10 °C

### Category

Brand:	Sauter
--------	--------

### Packaging & shipping

Delivery:	24 h
Dimensions packaging (WxDxH):	120 x 50 x 35 mm
Gross weight:	95 g
Net weight:	71 g
Shipping method:	Parcel service

### Construction

Cable length:	40 cm
Dimensions (WxDxH):	110 x 33 x 10 mm
Dimensions of weighing plate (WxDxH):	200 x 200 x 0 mm