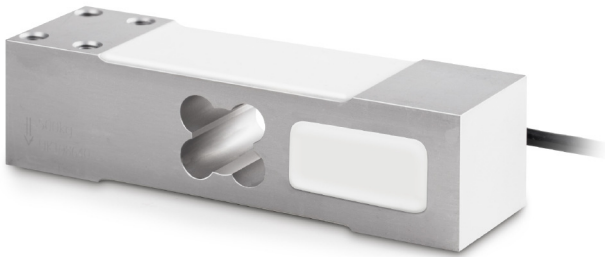


# KERN CP150-3P2

Aluminium singlepoint load cell



## Measuring system

Combined Error:	0,023 %
Load cell connection:	4-wire
Nominal sensitivity:	2
OIML class:	C3
Resolution Load cell à Verifiable:	3000 e
Weighing capacity [Max]:	150 kg
Y value:	10000

## Environmental conditions

Maximum operating temperature:	65 °C
Maximum operating temperature:	40 °C
Minimum ambient temperature:	-35 °C
Minimum operating temperature:	-10 °C

## Category

Brand:	Sauter
--------	--------

## Packaging & shipping

Delivery:	24 h
Dimensions packaging (WxDxH):	160 x 110 x 110 mm
Gross weight:	612 g
Net weight:	555 g
Shipping method:	Parcel service

## Construction

Cable length:	2 m
Dimensions (WxDxH):	150 x 35 x 40 mm
Dimensions of weighing plate (WxDxH):	400 x 400 x 0 mm

## Piktogramme

STANDARD

