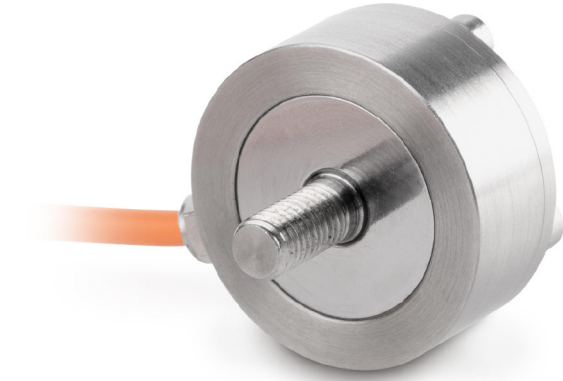


KERN CO20-Y2

Miniature button-type measuring cells made of stainless steel



Measuring system

Combined Error:	0,500 %
Load cell connection:	4-wire
Nominal sensitivity:	1,500
OIML class:	G5
Weighing capacity [Max]:	20 kg

Environmental conditions

Maximum operating temperature:	40 °C
Minimum operating temperature:	0 °C

Category

Brand:	Sauter
--------	--------

Packaging & shipping

Delivery:	24 h
Dimensions packaging (WxDxH):	120 x 90 x 85 mm
Gross weight:	111 g
Net weight:	72 g
Shipping method:	Parcel service

Construction

Cable length:	2 m
---------------	-----