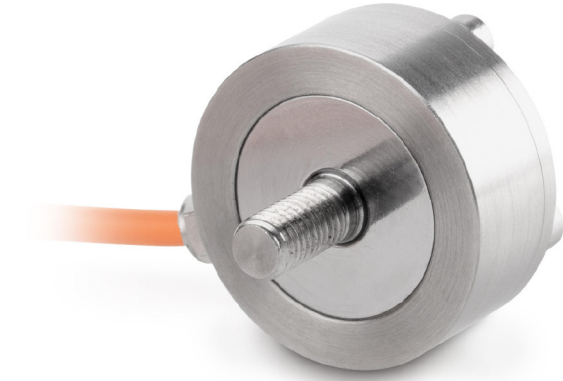


# KERN CO10-Y3

Miniature button-type measuring cells made of stainless steel



## Measuring system

Combined Error:	0,100 %
Load cell connection:	4-wire
Nominal sensitivity:	2
OIML class:	G2
Weighing capacity [Max]:	10 kg

## Environmental conditions

Maximum operating temperature:	40 °C
Minimum operating temperature:	0 °C

## Category

Brand:	Sauter
--------	--------

## Packaging & shipping

Delivery:	24 h
Dimensions packaging (WxDxH):	150 x 105 x 40 mm
Gross weight:	77 g
Net weight:	37 g
Shipping method:	Parcel service

## Construction

Cable length:	2 m
---------------	-----