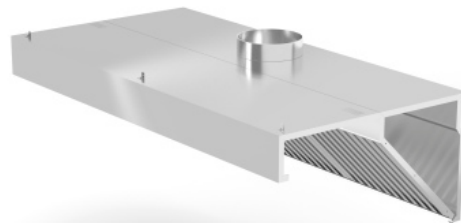


# Wall-mounted extractor hood

229309

Made of durable stainless steel (AISI 430). Equipped with a set of stainless steel labyrinth filters which can be washed in dishwashers. With collection pan for catching fat and grime that comes from the filters. Fitted with an ø200 mm ventilation connection at the top. The hood isn't equipped with a fan, this needs to be done separately.



## Specifications

Materials	: Stainless steel
Packed per	: 1
Length (mm)	: 1000
Width (mm)	: 700
Height (mm)	: 450
Measurements	: 1000x700x(H)450

## Transport specifications

EAN	: 8711369229309
Intrastat code	: 0
Gross weight (kg)	: 23.96
Net weight (kg)	: 23.91
Sales units per pallet	: 4
Plastic packaging (gram)	: 50

**HENDI B.V.**  
 Innovatielaan 6  
 6745 XW De Klomp, The Netherlands  
**T:** +31 (0)317 681 040  
**E:** info@hendi.eu

**HENDI Polska Sp. z o.o.**  
 ul. Firmowa 12  
 62-023 Robakowo, Poland  
**T:** +48 61 6587000  
**E:** info@hendi.pl

**HENDI GmbH**  
 Ehrling 15  
 5112 Lamprechtshausen, Austria  
**T:** +43 (0) 6274 200 10 0  
**E:** office.austria@hendi.eu

**HENDI S.R.L.**  
 Str. 13 decembrie 94A, Hala 14  
 Braşov, 500164, Romania  
**T:** +40 268 320330  
**E:** office@hendi.ro

**PKS HENDI South East Europe SA**  
 5 Metsovu Str.  
 18346 Moschato, Athens, Greece  
**T:** +30 210 4839700  
**E:** info@pks-hendi.com

**HENDI Italia S.R.L.**  
 Via Leonardo da Vinci 4  
 39100 Bolzano (BZ), Italy  
**T:** 800 727 438  
**E:** office.italy@hendi.eu