



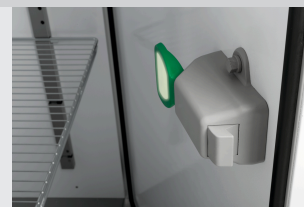
- ▶ Cold store
- ✓ Content: 1240 litres
- ✓ Dimensions: W 855 x D 900 x H 1760 mm



- ▶ Prepared for:
- ✓ Bearing rails
- ✓ Grilles
- ✓ Suspension device
- ✓ Access ramp



- ▶ Door
- ✓ With a panic lock
- ✓ Lockable
- ✓ Door hinge side can be changed



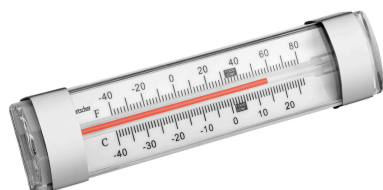
- ▶ Design
- ✓ Building kit - simple assembly

• Power load:	0,571 kW 230 V 50 Hz	• Material inside:	Aluminium
• Temperature range:	2 °C to 10 °C	• Material:	Stainless steel base
• Temperature control:	Digital		Steel plate
• Control unit:	Electronic	• Important information:	PVC coated
	Knob	• Size:	-
• Content:	1240 litre(s)	• Weight:	W 980 x D 1,040 x H 2,200 mm
• Size inside:	W 820 x D 860 x H 1760 mm		158.2 kg
• Door hinge side can be changed:	Yes		
• Control lamp:	yes		
• Door hinge side:	Right		
• Climate class:	4		
• Cooling:	Compressor		
• Coolant:	R290 / 0,130 kg		
• Digital display:	Yes		
• Interior lighting:	No		
• Insulation:	Polyurethane, 60 mm		
• Delivery state:	Building kit (simple assembly)		
• Type of door:	Leaf door(s)		
• Automatic defrosting function:	Yes		
• Drip water evaporation:	Yes		
• ON/OFF switch:	Yes		
• Lockable:	Yes		
• Properties:	Panic lock		
	Prepared for bearing rails, grilles, suspension device, access ramp		
• Ambient temperature:	16 °C to 38 °C		
• Thermostat:	Yes		
• Not included in delivery:	Bearing rails, grilles, suspension device, access ramp		



Thermometer A250

STAINLESS STEEL



- Important information: -
- Including: -
- Material: Stainless steel
Plastic
- Colour: White
Silver
- Design: Analogue
- With temperature sensor: No
- Temperature range: -40 °C to 25 °C
- Temperature measurement units: °C
°F

Code-No. 292043
GTIN 4015613664279

Thermometer A500



- Application area: Canteens
Refrigeration cell
Freezer cell
Refrigerated rooms
- Temperature range: -30 °C to 50 °C
- Designed for: Room temperature measurements
Refrigerators / upright freezers
Temperature monitoring during transport and storage
- Properties: Temperature range also in Fahrenheit
With suspension device

Code-No. 292049
GTIN 4015613664286

Thermometer A300

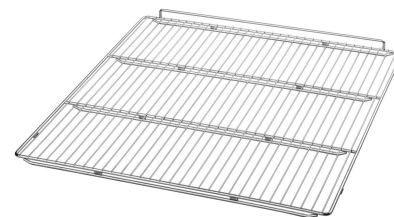
STAINLESS STEEL



- Control unit: -
- Application area: Canteens
Refrigeration cell
Freezer cell
Refrigeration cell
- Temperature range: -30 °C to 30 °C
- Design: Analogue
- With temperature sensor: No
- Designed for: Room temperature measurements
Refrigerators / upright freezers

Code-No. 292048
GTIN 4015613664262

Grid



- Load-bearing capacity max.: 20 kg
- Material: Steel
Galvanised
- Important information: -
- Size: W 830 x D 870 x H 40 mm
- Weight: 4.7 kg

Code-No. 700592
GTIN 4015613630380

Support rails

STAINLESS STEEL



- Distance between trays: 200 mm
- Set comprises: 4 bearing rails
- Number of drawers: 8
- Material: Stainless steel
- Important information: 4 bearing rails are required for the mini cooling cell
- Size: W 1,500 x D 40 x H 25 mm
- Weight: 5.9 kg

Code-No. 700593
GTIN 4015613680019

Suspension attachment

STAINLESS STEEL



- Set comprises: 2 bearing rails
1 suspended tube (can be adjusted horizontally in 5 positions)
- Load-bearing capacity max.: 150 kg
- Size tube: Ø 30 mm | Length: 830 mm
- Length bearing rail: 850 mm
- Clearance from floor: 1700 mm
- Material: Stainless steel
Plastic
- Important information: -
- Size: W 830 x D 30 x H 30 mm

Code-No. 700595
GTIN 4015613630397

Loading ramp

STAINLESS STEEL



- Load-bearing capacity max.: 130 kg
- Material: Stainless steel
- Important information: -
- Size: W 845 x D 125 x H 30 mm
- Weight: 1.6 kg

Code-No. 700597
GTIN 4015613630410