



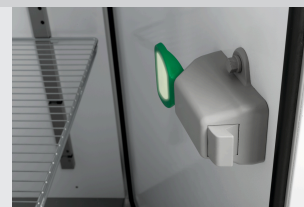
- ▶ Cold store
- ✓ Content: 1240 litres
- ✓ Dimensions: W 855 x D 900 x H 1760 mm



- ▶ Prepared for:
- ✓ Bearing rails
- ✓ Grilles
- ✓ Suspension device
- ✓ Access ramp



- ▶ Door
- ✓ With a panic lock
- ✓ Lockable
- ✓ Door hinge side can be changed



- ▶ Design
- ✓ Fully assembled

- |   |   |
|---|---|
| <ul style="list-style-type: none"> <li>• Power load: 0,571 kW   230 V   50 Hz</li> <li>• Temperature range: 2 °C to 10 °C</li> <li>• Temperature control: Digital</li> <li>• Control unit: Electronic Knob</li> <li>• Content: 1240 litre(s)</li> <li>• Size inside: W 820 x D 860 x H 1760 mm</li> <li>• Door hinge side can be changed: Yes</li> <li>• Control lamp: yes</li> <li>• Door hinge side: Right</li> <li>• Climate class: 4</li> <li>• Cooling: Compressor</li> <li>• Digital display: Yes</li> <li>• Interior lighting: No</li> <li>• Insulation: Polyurethane, 60 mm</li> <li>• Delivery state: Permanently mounted</li> <li>• Type of door: Leaf door(s)</li> <li>• Automatic defrosting function: Yes</li> <li>• Drip water evaporation: Yes</li> <li>• ON/OFF switch: Yes</li> <li>• Lockable: Yes</li> <li>• Properties: Panic lock<br/>Prepared for bearing rails, grilles, suspension device, access ramp</li> <li>• Ambient temperature: 16 °C to 38 °C</li> <li>• Thermostat: Yes</li> <li>• Not included in delivery: Bearing rails, grilles, suspension device, access ramp</li> <li>• Material inside: Aluminium</li> </ul> | <ul style="list-style-type: none"> <li>• Material inside: Stainless steel base</li> <li>• Material: Steel plate<br/>PVC coated</li> <li>• Important information: -</li> <li>• Coolant: R290 / 0,130 kg</li> <li>• Size: W 980 x D 1,040 x H 2,200 mm</li> <li>• Weight: 158.2 kg</li> </ul> |
|---|---|

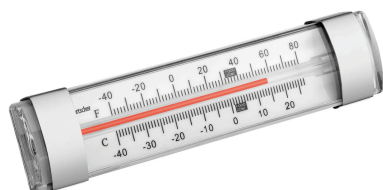


# Mini cold room 1240L

## Add on Products

### Thermometer A250

STAINLESS STEEL



- Important information: -
- Including: -
- Material: Stainless steel  
Plastic
- Colour: White  
Silver
- Design: Analogue
- With temperature sensor: No
- Temperature range: -40 °C to 25 °C
- Temperature measurement units: °C  
°F

Code-No. 292043  
GTIN 4015613664279

### Thermometer A500



- Application area: Canteens  
Refrigeration cell  
Freezer cell  
Refrigerated rooms
- Temperature range: -30 °C to 50 °C
- Designed for: Room temperature measurements  
Refrigerators / upright freezers  
Temperature monitoring during transport and storage
- Properties: Temperature range also in Fahrenheit  
With suspension device

Code-No. 292049  
GTIN 4015613664286

### Thermometer A300

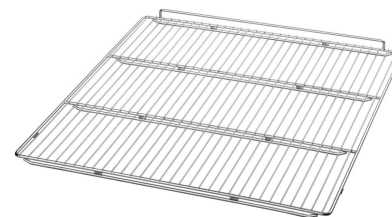
STAINLESS STEEL



- Control unit: -
- Application area: Canteens  
Refrigeration cell  
Freezer cell  
Refrigeration cell
- Temperature range: -30 °C to 30 °C
- Design: Analogue
- With temperature sensor: No
- Designed for: Room temperature measurements  
Refrigerators / upright freezers

Code-No. 292048  
GTIN 4015613664262

### Grid



- Load-bearing capacity max.: 20 kg
- Material: Steel  
Galvanised
- Important information: -
- Size: W 830 x D 870 x H 40 mm
- Weight: 4.7 kg

Code-No. 700592  
GTIN 4015613630380

### Support rails

STAINLESS STEEL



- Distance between trays: 200 mm
- Set comprises: 4 bearing rails
- Number of drawers: 8
- Material: Stainless steel
- Important information: 4 bearing rails are required for the mini cooling cell
- Size: W 1,500 x D 40 x H 25 mm
- Weight: 5.9 kg

Code-No. 700593  
GTIN 4015613680019

### Suspension attachment

STAINLESS STEEL



- Set comprises: 2 bearing rails  
1 suspended tube (can be adjusted horizontally in 5 positions)
- Load-bearing capacity max.: 150 kg
- Size tube: Ø 30 mm | Length: 830 mm
- Length bearing rail: 850 mm
- Clearance from floor: 1700 mm
- Material: Stainless steel  
Plastic
- Important information: -
- Size: W 830 x D 30 x H 30 mm

Code-No. 700595  
GTIN 4015613630397

### Loading ramp

STAINLESS STEEL



- Load-bearing capacity max.: 130 kg
- Material: Stainless steel
- Important information: -
- Size: W 845 x D 125 x H 30 mm
- Weight: 1.6 kg

Code-No. 700597  
GTIN 4015613630410