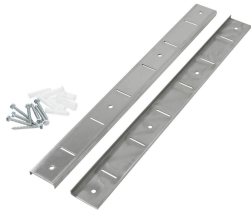


- Modular kit principle - required for installation: 1 to 2 wall shelves - available in many sizes  
1 pair of brackets (per wall shelf)  
1 pair adjustment rails
- Delivery state: Building kit (simple assembly)
- Number of shelves: 1
- Height-adjustable shelves: Yes
- Assembly type: Connecting system
- Design shelves: Full-surface
- Including: -
- Size Shelves: W 1000 x D 355 mm
- Shelf type: Wall shelf
- Material: Stainless steel
- Properties: -
- Important information: -
- Total load-bearing capacity, max.: 120 kg
- Size: W 1,000 x D 355 x H 27 mm
- Weight: 3.9 kg

# Wall-mounting shelf 1000x355x27, SS

Add on Products

## 1 pair of adjusting bars, 530mm



- Important information: -
- Size: W 55 x D 530 x H 10 mm
- Weight: 0.92 kg

Code-No. 600061  
GTIN 4015613442815

## Consoles 1 pair



- Important information: -
- Size: W 355 x D 35 x H 90 mm
- Weight: 0.85 kg

Code-No. 600601  
GTIN 4015613442822

## Stainl.steel polish.spray 500ml can



- Content / can: 500 ml
- Application: Remove heavy soiling such as grease residue first  
Do not spray onto hot surfaces
- allow them to cool down first:
- Application: Before use, bring the can to room temperature and shake well  
Spray sparingly onto the surfaces to be cleaned  
  
Rub evenly over the entire surface  
Polish with a dry cloth

Code-No. 173031  
GTIN 4015613360195

## Power cleaner F1L, set of 2



- Designed for: Stubborn dirt, especially in kitchens  
Grill and combi steamer cleaning (without cleaning system)
- Content: 2 x 1 litre
- Model: Liquid  
High concentrate
- Ph level: 13,5
- HACCP compliant: Yes
- Chlorine-free: Yes
- Phosphate-free: Yes

Code-No. 173078  
GTIN 4015613731926

### Oil and grease remover F1L



- Content: 6 x 1 litre
- Model: Liquid
- HACCP compliant: Yes
- Chlorine-free: Yes
- Phosphate-free: Yes
- Including: -
- Order quantity unit: 1 box (6 bottles)
- Designed for: Wipe-off work surfaces, stainless steel surfaces  
Tiled walls and floors  
Highly effective against deposits in coffee cans  
Machines, appliances

Code-No. 173276  
GTIN 4015613761176