



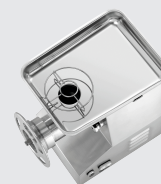
▶ Powerful

- ✓ Up to 500 kg/h



▶ Large filling chute

- ✓ Ø 76 mm



▶ Reverse run

▶ HACCP-compliant storage in refrigerator possible

- ✓ Removeable mincing unit



▶ Long lifetime

- ✓ Ventilated motor



▶ Includes:

- ✓ 1 perforated disk (6 mm)
- ✓ 1 stainless steel knife with 4 blades
- ✓ 1 plug

This meat grinder with extra large filling chute and ventilated motor produces up to 500 kg per hour. The removeable mincing unit enables HACCP-compliant storage in the refrigerator.

- | | | | |
|------------------------------|---|---------------------|--------------------------|
| • Power load: | 2,2 kW 400 V 50 Hz | • Ventilated motor: | Yes |
| • Control lamp: | ON/OFF | • Size: | W 305 x D 470 x H 500 mm |
| | Forwards run | • Weight: | 40.8 kg |
| | Reverse run | | |
| • ON/OFF switch: | Yes | | |
| • Overload protection: | Yes | | |
| • Unger system: | No | | |
| • Reverse run: | Yes | | |
| • Colour: | Silver | | |
| • Including: | 1 perforated disk 6 mm | | |
| | 1 stainless steel knife, 4-wing | | |
| | 1 stamper | | |
| • Diameter filling shaft: | 76 mm | | |
| • Material gears: | Stainless steel | | |
| • Material: | Stainless steel | | |
| • Important information: | - | | |
| • Output max.: | 500 kg / hour | | |
| • Diameter disks: | 100 mm | | |
| • Material grinder funnel: | Aluminium | | |
| • Properties: | All attached stainless steel parts and the mincer are dishwasher-safe | | |
| | Large filling chute | | |
| • Equipment connection: | 3 NAC | | |
| | Pluggable | | |
| • Removeable grinder funnel: | Yes | | |
| • Removeable grinder: | Yes | | |
| • Removeable mincer: | yes | | |
| | Enables HACCP-compliant storage in the refrigerator | | |

Knife FW500



- Properties: 4-wing
- Important information: -
- Material: Carbon steel
- Size: W 90 x D 90 x H 13 mm
- Weight: 0.1 kg

Code-No. 370242
GTIN 4015613775807

Perforated disc FW500



- Material: Carbon steel
- Important information: -
- Properties: Perforation 6 mm
- Size: W 97 x D 97 x H 9 mm
- Weight: 0.29 kg

Code-No. 370243
GTIN 4015613775814