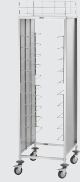


▶ Designed for GN containers, GN trays and meal trays

- ✓ 10 x 1/1 GN
- ✓ 20 x 1/2 GN



▶ Load capacity:

- ✓ Max. total: 80 kg
- ✓ Max. per shelf: 10 kg

▶ Easy transport of GN containers, GN trays and meal trays



▶ Easy handling

- ✓ Fast loading and unloading of trolley



▶ Lowered rail system

- ✓ No slipping of transported items



Safe transport of GN containers, grills and trays up to 1/1 GN on 10 shelves. Thanks to the additional storage space with a transport lock, jugs, glasses and bottles can also be transported safely.

- | | | | |
|---------------------------|--------------------------------|---------------------------|----------------------------|
| • Material: | Stainless steel | • Estimated delivery time | 18 / 2023 |
| • Model: | GN slots | • from our warehouse in | Salzkotten, Germany is |
| • Application area: | Clearing | • week: | |
| • Designed for: | 1/1 GN | • Size: | W 580 x D 685 x H 1,840 mm |
| | 1/2 GN | • Weight: | 28 kg |
| | 1/3 GN | | |
| | 2/3 GN | | |
| • Number of drawers: | 10 | | |
| • Load-bearing capacity | 10 kg | | |
| per drawer max.: | | | |
| • Can be loaded from | Yes | | |
| both sides: | | | |
| • Worktop surface: | yes | | |
| • Properties: | - | | |
| • Not included in delive- | GN containers | | |
| ry: | Sheets | | |
| | Grilles | | |
| • Size utility space: | W 480 x D 540 mm | | |
| • Load-bearing capacity | 10 kg | | |
| worktop surface max.: | | | |
| • Total load-bearing ca- | 80 kg | | |
| capacity, max.: | | | |
| • With handle(s): | No | | |
| • Swivel casters: | 4 swivel casters, 2 with brake | | |
| • Diameter casters: | 100 mm | | |
| • Wheel buffer: | 4 units, plastic | | |
| • Delivery state: | Building kit (simple assembly) | | |
| • Important information: | - | | |
| • Distance between | 120 mm | | |
| trays: | | | |
| • Depth container max.: | 100 mm | | |

GN-container, 1/1GN,D20, Basic Line

CNS



- Stackable: Yes
- Design: No perforation
- Reinforced edge: No
- Surface: Silk matt
- Depth container: 20 mm
- Gastronorm: 1/1 GN
- Norm: EN 631
- Series: Basic Line
- Material: Chrome-nickel steel
- Content: 3,4 litre(s)
- Important information: -

Code-No. 711020
GTIN 4015613695556

GN-container, 1/1GN, D40, Basic Line

CNS



- Content: 5 litre(s)
- Stackable: Yes
- Design: No perforation
- Reinforced edge: No
- Surface: Silk matt
- Depth container: 40 mm
- Gastronorm: 1/1 GN
- Norm: EN 631
- Series: Basic Line
- Material: Chrome-nickel steel
- Size: W 530 x D 325 x H 40 mm

Code-No. 711040
GTIN 4015613695570

GN-container, 1/1GN,D65, Basic Line

CNS



- Content: 9 litre(s)
- Stackable: Yes
- Design: No perforation
- Reinforced edge: No
- Surface: Silk matt
- Depth container: 65 mm
- Gastronorm: 1/1 GN
- Norm: EN 631
- Series: Basic Line
- Material: Chrome-nickel steel
- Size: W 530 x D 325 x H 65 mm

Code-No. 711065
GTIN 4015613695587

GN-container, 1/1GN,D100, Basic Line

CNS



- Content: 14 litre(s)
- Stackable: Yes
- Design: No perforation
- Reinforced edge: No
- Surface: Silk matt
- Depth container: 100 mm
- Gastronorm: 1/1 GN
- Norm: EN 631
- Series: Basic Line
- Material: Chrome-nickel steel
- Size: W 530 x D 325 x H 100 mm

Code-No. 711100
GTIN 4015613695594

GN-container, 1/2GN,D20, Basic Line

CNS



- Stackable: Yes
- Design: No perforation
- Reinforced edge: No
- Surface: Silk matt
- Depth container: 20 mm
- Gastronorm: 1/2 GN
- Norm: EN 631
- Series: Basic Line
- Material: Chrome-nickel steel
- Content: 1,6 litre(s)
- Size: W 325 x D 265 x H 20 mm

Code-No. 712020
GTIN 4015613695686

GN-container, 1/2GN,D40, Basic Line

CNS



- Content: 2 litre(s)
- Stackable: Yes
- Design: No perforation
- Reinforced edge: No
- Surface: Silk matt
- Depth container: 40 mm
- Gastronorm: 1/2 GN
- Norm: EN 631
- Series: Basic Line
- Material: Chrome-nickel steel
- Important information: -

Code-No. 712040
GTIN 4015613695693

GN-container, 1/2GN,D65, Basic Line

CNS



- Content: 4 litre(s)
- Stackable: Yes
- Design: No perforation
- Reinforced edge: No
- Surface: Silk matt
- Depth container: 65 mm
- Gastronorm: 1/2 GN
- Norm: EN 631
- Series: Basic Line
- Material: Chrome-nickel steel
- Size: W 325 x D 265 x H 65 mm

Code-No. 712065
GTIN 4015613695709

GN-container, 1/2GN,D100, Basic Line

CNS



- Content: 6,5 litre(s)
- Stackable: Yes
- Design: No perforation
- Reinforced edge: No
- Surface: Silk matt
- Depth container: 100 mm
- Gastronorm: 1/2 GN
- Norm: EN 631
- Series: Basic Line
- Material: Chrome-nickel steel
- Size: W 325 x D 265 x H 100 mm

Code-No. 712100
GTIN 4015613695716

GN-container, 1/3GN,D20, Basic Line

CNS



- Stackable: Yes
- Design: No perforation
- Reinforced edge: No
- Surface: Silk matt
- Depth container: 20 mm
- Gastronorm: 1/3 GN
- Norm: EN 631
- Series: Basic Line
- Material: Chrome-nickel steel
- Content: 1,1 litre(s)
- Size: W 325 x D 176 x H 20 mm

Code-No. 713020
GTIN 4015613695747

GN-container,1/3GN,D40, Basic Line

CNS



- Content: 1,5 litre(s)
- Stackable: Yes
- Design: No perforation
- Reinforced edge: No
- Surface: Silk matt
- Depth container: 40 mm
- Gastronorm: 1/3 GN
- Norm: EN 631
- Series: Basic Line
- Material: Chrome-nickel steel
- Important information: -

Code-No. 713040
GTIN 4015613695761

GN-container,1/3GN,D65, Basic Line

CNS



- Content: 2,5 litre(s)
- Stackable: Yes
- Design: No perforation
- Reinforced edge: No
- Surface: Silk matt
- Depth container: 65 mm
- Gastronorm: 1/3 GN
- Norm: EN 631
- Series: Basic Line
- Material: Chrome-nickel steel
- Size: W 325 x D 176 x H 65 mm

Code-No. 713065
GTIN 4015613695778

GN-container, 1/3GN,D100, Basic Line

CNS



- Content: 4 litre(s)
- Stackable: Yes
- Design: No perforation
- Reinforced edge: No
- Surface: Silk matt
- Depth container: 100 mm
- Gastronorm: 1/3 GN
- Norm: EN 631
- Series: Basic Line
- Material: Chrome-nickel steel
- Size: W 325 x D 176 x H 100 mm

Code-No. 713100
GTIN 4015613695785

Tray 1/1GN, 20 mm

CNS 18/10



- Stackable: Yes
- Design: No perforation
- Reinforced edge: Yes
- Properties: -
- Depth container: 20 mm
- Gastronorm: 1/1 GN
- Material: CNS 18/10
- Important information: -
- Content: 3,5 litre(s)
- Surface: Silk matt
- Norm: EN 631

Code-No. A101185
GTIN 4015613271729

Tray 1/1GN, 40 mm

CNS 18/10



- Stackable: Yes
- Design: No perforation
- Reinforced edge: Yes
- Properties: -
- Depth container: 40 mm
- Gastronorm: 1/1 GN
- Material: CNS 18/10
- Important information: -
- Content: 5 litre(s)
- Surface: Silk matt
- Norm: EN 631

Code-No. A101186
GTIN 4015613271736

Tray 1/1GN, 65 mm

CNS 18/10



- Stackable: Yes
- Design: No perforation
- Reinforced edge: Yes
- Properties: -
- Depth container: 65 mm
- Gastronorm: 1/1 GN
- Material: CNS 18/10
- Important information: -
- Content: 9 litre(s)
- Surface: Silk matt
- Norm: EN 631

Code-No. A101187
GTIN 4015613271743

GN tray, 1/2 with reinforced rim

CNS 18/10



- Stackable: Yes
- Design: No perforation
- Reinforced edge: Yes
- Properties: -
- Gastronorm: 1/2 GN
- Important information: -
- Depth container: 20 mm
- Material: CNS 18/10
- Content: 1,6 litre(s)
- Surface: Silk matt
- Norm: EN 631

Code-No. A101190
GTIN 4015613271750

Gastronorm trolley AGN1000-1/1

Add on Products

Tray 1/2GN, 40 mm

CNS 18/10



- Stackable: Yes
- Design: No perforation
- Reinforced edge: Yes
- Properties: -
- Gastronorm: 1/2 GN
- Material: CNS 18/10
- Important information: -
- Depth container: 40 mm
- Content: 2 litre(s)
- Surface: Silk matt
- Norm: EN 631

Code-No. A101191
GTIN 4015613271767

Tray 1/2GN, 65 mm

CNS 18/10

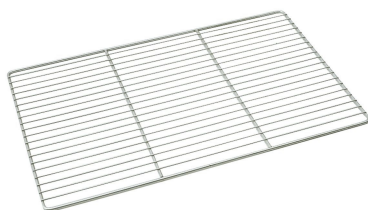


- Stackable: Yes
- Design: No perforation
- Reinforced edge: Yes
- Properties: -
- Depth container: 65 mm
- Gastronorm: 1/2 GN
- Material: CNS 18/10
- Important information: -
- Content: 4 litre(s)
- Surface: Silk matt
- Norm: EN 631

Code-No. A101192
GTIN 4015613271774

GN grid 1/1, SS

CNS 18/10



- Gastronorm: 1/1 GN
- Material: CNS 18/10
- Important information: -
- Norm: EN 631
- Series: Top Line
- Size: W 325 x D 530 x H 10 mm
- Weight: 0.95 kg

Code-No. A101091
GTIN 4016098175250

Grid 1/2 GN

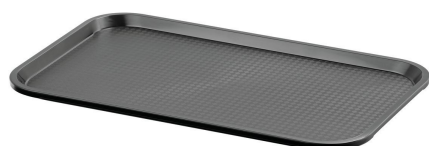
STAINLESS STEEL



- Gastronorm: 1/2 GN
- Material: Stainless steel
- Important information: -
- Size: W 330 x D 265 x H 55 mm
- Weight: 0.75 kg

Code-No. 786009
GTIN 4015613815275

Tray GN110-S



- Colour: Black
- Important information: -
- Dishwasher safe: Yes
- Stackable: Yes
- Dimensions surface: W 495 x D 290 mm
- Worktop surface: Structured
- Norm format: 1/1 GN
- Material: Plastic (polypropylene)
- Properties: -
- Size: W 530 x D 325 x H 20 mm
- Weight: 0.59 kg

Code-No. 701053
GTIN 4015613695303

GN-container, 2/3 GN,D20, Basic Line



- Stackable: Yes
- Design: No perforation
- Reinforced edge: No
- Surface: Silk matt
- Depth container: 20 mm
- Gastronorm: 2/3 GN
- Norm: EN 631
- Series: Basic Line
- Material: Chrome-nickel steel
- Content: 2,3 litre(s)
- Size: W 354 x D 325 x H 20 mm

Code-No. 723020
GTIN 4015613695624

GN-container,2/3GN,D40, Basic Line



- Content: 3 litre(s)
- Stackable: Yes
- Design: No perforation
- Reinforced edge: No
- Surface: Silk matt
- Depth container: 40 mm
- Gastronorm: 2/3 GN
- Norm: EN 631
- Series: Basic Line
- Material: Chrome-nickel steel
- Size: W 354 x D 325 x H 40 mm

Code-No. 723040
GTIN 4015613695631

GN-container, 2/3GN,D65, Basic Line



- Content: 5,5 litre(s)
- Stackable: Yes
- Design: No perforation
- Reinforced edge: No
- Surface: Silk matt
- Depth container: 65 mm
- Gastronorm: 2/3 GN
- Norm: EN 631
- Series: Basic Line
- Material: Chrome-nickel steel
- Size: W 354 x D 325 x H 65 mm

Code-No. 723065
GTIN 4015613695648

Gastronorm trolley AGN1000-1/1

Add on Products

GN-container, 2/3GN,D100, Basic Line

CNS



- Content: 9 litre(s)
- Stackable: Yes
- Design: No perforation
- Reinforced edge: No
- Surface: Silk matt
- Depth container: 100 mm
- Gastronorm: 2/3 GN
- Norm: EN 631
- Series: Basic Line
- Material: Chrome-nickel steel
- Important information: -

Code-No. 723100
GTIN 4015613695655

GN container, 1/1, D20

CNS
18/10



- Stackable: Yes
- Design: No perforation
- Reinforced edge: No
- Properties: -
- Surface: High-gloss
- Depth container: 20 mm
- Gastronorm: 1/1 GN
- Norm: EN 631
- Series: Top Line
- Important information: -
- Material: CNS 18/10

Code-No. A121025
GTIN 4016098166722

GN container, 1/1, D40

CNS
18/10



- Content: 5 litre(s)
- Stackable: Yes
- Design: No perforation
- Reinforced edge: No
- Properties: -
- Surface: High-gloss
- Depth container: 40 mm
- Gastronorm: 1/1 GN
- Norm: EN 631
- Series: Top Line
- Important information: -

Code-No. A121040
GTIN 4015613271064

GN container, 1/1, D65

CNS
18/10



- Content: 9 litre(s)
- Stackable: Yes
- Design: No perforation
- Reinforced edge: No
- Properties: -
- Surface: High-gloss
- Depth container: 65 mm
- Gastronorm: 1/1 GN
- Norm: EN 631
- Series: Top Line
- Important information: -

Code-No. A121065
GTIN 4016098162755

GN container, 1/1, D100

CNS
18/10



- Content: 14 litre(s)
- Stackable: Yes
- Design: No perforation
- Reinforced edge: No
- Properties: -
- Surface: High-gloss
- Depth container: 100 mm
- Gastronorm: 1/1 GN
- Norm: EN 631
- Series: Top Line
- Important information: -

Code-No. A121100
GTIN 4016098162762

GN container, 1/2, D20

CNS
18/10



- Stackable: Yes
- Design: No perforation
- Properties: -
- Surface: High-gloss
- Depth container: 20 mm
- Gastronorm: 1/2 GN
- Norm: EN 631
- Series: Top Line
- Important information: -
- Material: CNS 18/10
- Content: 1,6 litre(s)

Code-No. A122020
GTIN 4015613271088

GN container, 1/2, D40

CNS
18/10



- Content: 2 litre(s)
- Stackable: Yes
- Design: No perforation
- Reinforced edge: No
- Properties: -
- Surface: High-gloss
- Depth container: 40 mm
- Gastronorm: 1/2 GN
- Norm: EN 631
- Series: Top Line
- Important information: -

Code-No. A122040
GTIN 4015613271095

GN container, 1/2, D65

CNS
18/10



- Content: 4 litre(s)
- Stackable: Yes
- Design: No perforation
- Reinforced edge: No
- Properties: -
- Surface: High-gloss
- Depth container: 65 mm
- Gastronorm: 1/2 GN
- Norm: EN 631
- Series: Top Line
- Important information: -

Code-No. A122065
GTIN 4016098162779

GN container, 1/2, D100

CNS
18/10



- Content: 6,5 litre(s)
- Stackable: Yes
- Design: No perforation
- Reinforced edge: No
- Properties: -
- Surface: High-gloss
- Depth container: 100 mm
- Gastronorm: 1/2 GN
- Norm: EN 631
- Series: Top Line
- Important information: -

Code-No. A122100
GTIN 4016098162786

GN container, 1/3, D20

CNS
18/10



- Stackable: Yes
- Design: No perforation
- Reinforced edge: No
- Properties: -
- Surface: High-gloss
- Depth container: 20 mm
- Gastronorm: 1/3 GN
- Norm: EN 631
- Series: Top Line
- Important information: -
- Material: CNS 18/10

Code-No. A123020
GTIN 4015613271255

GN container, 1/3, D40

CNS
18/10



- Content: 1,5 litre(s)
- Stackable: Yes
- Design: No perforation
- Reinforced edge: No
- Properties: -
- Surface: High-gloss
- Depth container: 40 mm
- Gastronorm: 1/3 GN
- Norm: EN 631
- Series: Top Line
- Important information: -

Code-No. A123040
GTIN 4015613271262

GN container, 1/3, D65

CNS
18/10



- Content: 2,5 litre(s)
- Stackable: Yes
- Design: No perforation
- Reinforced edge: No
- Properties: -
- Surface: High-gloss
- Depth container: 65 mm
- Gastronorm: 1/3 GN
- Norm: EN 631
- Series: Top Line
- Important information: -

Code-No. A123065
GTIN 4016098162793

GN container, 1/3, D100

CNS
18/10



- Content: 4 litre(s)
- Stackable: Yes
- Design: No perforation
- Reinforced edge: No
- Properties: -
- Surface: High-gloss
- Depth container: 100 mm
- Gastronorm: 1/3 GN
- Norm: EN 631
- Series: Top Line
- Important information: -

Code-No. A123100
GTIN 4016098162809

GN container, 2/3, D20

CNS
18/10



- Stackable: Yes
- Design: No perforation
- Reinforced edge: No
- Properties: -
- Surface: High-gloss
- Depth container: 20 mm
- Gastronorm: 2/3 GN
- Norm: EN 631
- Series: Top Line
- Important information: -
- Material: CNS 18/10

Code-No. A125020
GTIN 4015613271194

GN container, 2/3, D40

CNS
18/10



- Content: 3 litre(s)
- Stackable: Yes
- Design: No perforation
- Reinforced edge: No
- Properties: -
- Surface: High-gloss
- Depth container: 40 mm
- Gastronorm: 2/3 GN
- Norm: EN 631
- Series: Top Line
- Important information: -

Code-No. A125040
GTIN 4015613271200

GN container, 2/3, D65

CNS
18/10



- Content: 5,5 litre(s)
- Stackable: Yes
- Design: No perforation
- Reinforced edge: No
- Properties: -
- Surface: High-gloss
- Depth container: 65 mm
- Gastronorm: 2/3 GN
- Norm: EN 631
- Series: Top Line
- Important information: -

Code-No. A125065
GTIN 4015613271217

GN container, 2/3, D100

CNS
18/10

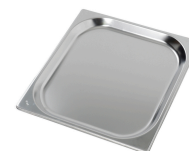


- Content: 9 litre(s)
- Stackable: Yes
- Design: No perforation
- Reinforced edge: No
- Properties: -
- Surface: High-gloss
- Depth container: 100 mm
- Gastronorm: 2/3 GN
- Norm: EN 631
- Series: Top Line
- Important information: -

Code-No. A125100
GTIN 4015613271224

GN tray 2/3

CNS
18/10



- Gastronorm: 2/3 GN
- Important information: -
- Stackable: Yes
- Design: No perforation
- Reinforced edge: Yes
- Properties: -
- Depth container: 20 mm
- Gastronorm: 2/3 GN
- Material: CNS 18/10
- Content: 2,3 litre(s)
- Surface: Silk matt

Code-No. A101195
GTIN 4015613271781

Tray 2/3GN, 40 mm

CNS
18/10



- Stackable: Yes
- Design: No perforation
- Reinforced edge: Yes
- Properties: -
- Depth container: 40 mm
- Gastronorm: 2/3 GN
- Material: CNS 18/10
- Important information: -
- Content: 3 litre(s)
- Surface: Silk matt
- Norm: EN 631

Code-No. A101196
GTIN 4015613271798

Tray 2/3GN, 65 mm

CNS
18/10



- Stackable: Yes
- Design: No perforation
- Reinforced edge: Yes
- Depth container: 65 mm
- Gastronorm: 2/3 GN
- Material: CNS 18/10
- Important information: -
- Content: 5,5 litre(s)
- Surface: Silk matt
- Norm: EN 631
- Series: Top Line

Code-No. A101197
GTIN 4015613271804

GN grid, 2/3

CNS

- Gastronorm: 2/3 GN
- Important information: -
- Gastronorm: 2/3 GN
- Material: CNS 18/10
- Size: W 355 x D 325 x H 10 mm
- Weight: 0.79 kg

Code-No. 133212
GTIN 4015613332123