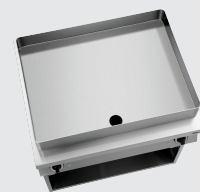




- ▶ Pot:
 - ✓ Steel
 - ✓ Volume: 20 litres
 - ✓ Dimensions: W 750 x D 560 x H 80 mm
 - ✓ Rounded corners



- ▶ 2 heating zones:
 - ✓ Can be controlled separately



- ▶ All-round welded-on splash guard

- ▶ Adjustable height: 850 - 900 mm

- ▶ Includes:
 - ✓ 1 fish slice
 - ✓ 1 plug



The multi-roaster is indispensable in any catering kitchen thanks to the diverse possibilities it offers. The appliance has a large capacity that makes it ideal for goulash and ragout. However, its rounded pan is also perfect for preparing roast potatoes, fish, meat, and vegetables.

- Heating zones can be controlled separately: Yes
- Power per heating zone: 3,3 kW
- Type: Upright unit
- Power load: 6,6 kW | 400 V | 50/60 Hz
- Grease release tap: Yes
- Grease collection tank: No
- Equipment connection: 3 NAC
- Temperature range: 30 °C to 290 °C
- Content: 20 litre(s)
- Series: -
- Material crucible: Steel
- Size crucible: W 750 x D 560 x H 80 mm
- Number of heating zones: 2
- Board thickness: 12 mm
- Material: Stainless steel
- Sub-counter unit type: Open
- Size base unit: W 750 x D 500 x H 470 mm
- Height-adjustable feet: Yes
- Height adjustable: 850 mm to 900 mm
- Control lamp: Heat up
In operation
- Important information: -
- Including: 1 fish slice
1 plug
- Properties: Rounded well
All-round splash-water, welded
Base with 2/1 GN drawers
- Size: W 800 x D 712 x H 980 mm
- Weight: 95 kg

Intensive power cleaner F1L, set of 2



- Order quantity unit: 1 box (2 bottles)
- Content: 2 x 1 litre
- Ph level: 14
- HACCP compliant: Yes
- Chlorine-free: Yes
- Phosphate-free: Yes
- Including: 1 spray head
1 spray lance
- Important information: Attention: Not suitable for surfaces sensitive to alkali such aluminium
Exclusively available in Germany and Austria

Code-No. 173080
GTIN 4015613731933

Stainl.steel polish.spray 500ml can



- Content / can: 500 ml
- Application: Remove heavy soiling such as grease residue first
Do not spray onto hot surfaces
- allow them to cool down first:
- Application: Before use, bring the can to room temperature and shake well
Spray sparingly onto the surfaces to be cleaned

Rub evenly over the entire surface
Polish with a dry cloth

Code-No. 173031
GTIN 4015613360195