

GE 25



A200052

GE 30



200057

ENGLISH

Table of contents

1. Safety 20
1.1 Key to symbols 20
1.2 Safety instructions 21
1.3 Proper use 25

2. General information 26
2.1 Liability and Warrantees 26
2.2 Copyright protection 26
2.3 Declaration of conformity 26

3. Transport, packaging and storage..... 27
3.1 Delivery check 27
3.2 Packaging..... 27
3.3 Storage..... 27

4. Technical data 28
4.1 Overview of parts 28
4.2 Technical specification 29

5. Installation and operation..... 30
5.1 Installation 30
5.2 Operation..... 31

6. Cleaning and descaling 34

7. Waste disposal 36

Bartscher GmbH
Franz-Kleine-Str. 28
33154 Salzkotten
Germany

phone: +49 (0) 5258 971-0
fax: +49 (0) 5258 971-120



Read this instruction manual before using and keep them available at all times!

This instruction manual contains information about the installation, operation and maintenance of the device and should be consulted as an important source of information and reference guide.

Awareness of the safety instructions and instructions for use in this manual will ensure the safe and correct use of the device.

In addition to the information given here, you should comply with any local Health and safety Controls and generally applicable safety regulations.

The instruction manual forms part of the product and should be kept near the device and easily accessible for anyone carrying out the installation, servicing, maintenance or cleaning.

Please keep these instructions and give them to future owners of the device.

1. Safety

This device is designed in accordance with the presently applicable technological standards. However, the device can pose a danger if handled improperly and inappropriately.

All persons using the device must follow the recommendations and instructions in this instruction manual.

1.1 Key to symbols

In this manual, symbols are used to highlight important safety instructions and any advice relating to the device. The instructions should be followed very carefully to avoid any risk of accident, personal injury or material damage.



WARNING!

This symbol highlights hazards which could lead to injury.



WARNING!

This symbol highlights dangerous situations which could lead to injury or death.



HOT SURFACE!

This symbol is a warning that the device surface is hot when in use. Ignoring this warning may result in burns!



HOT STEAM!

This symbol indicates that during the operation the hot steam escapes from the device. Risk of scalding if safety instructions are not observed!



CAUTION!

This symbol highlights dangerous situations which could lead to light injuries, or damage, malfunction, and/or destruction of the device.



NOTE!

This symbol highlights recommendations and information aimed for effective and trouble-free device operation.

1.2 Safety instructions

- The device can be used by children **8 years and up**, as well as by people with disabilities and those with limited experience/knowledge as long as they are under supervision or have been instructed on proper use of the device and its possible dangers. **Children** should not play with the device. Cleaning and **maintenance cannot be performed by children** younger than 8 years old and must be done under supervision. **Children under the age of 8 years old** must be kept away from the device and its power cord.
- **Never** leave the device unattended when in use.
- Only use the device indoors.

- The device must be operated in correct and safe technical condition only. In case of operational problems disconnect the device from the power supply (pull the plug from the socket) and contact the service company.
- Prevent access of children to the package materials like plastic bags and foamed polystyrene elements. **Suffocation hazard!**
- Only a qualified technician and using original spare parts and accessories should carry out repairs and maintenance of the device. **Do not attempt to repair the device yourself.**
- Do not use any accessory or spare parts that have not been recommended by the manufacturer. These can be dangerous for the user or lead to damages of the device or personal injury, and further, the warranty expires.
- To prevent hazards and to ensure optimum efficiency, no modifications or alterations to the device that are not explicitly approved by the manufacturer may be undertaken.



DANGER! Electric shock hazard!

To avoid the hazard results please follow the safety instructions below.

- Never allow the power cable to come into contact with heat sources or sharp edges. The power cable should not hang over the side of the working surface. Ensure that no one can step on or trip over the cable.
- The power cable must not be folded, bent or tangled, and must always remain fully unrolled. Never place the device or other objects on the power cable.

- Do not cover the cable. Keep away the cable from operating range.
- Check the power cord regularly for damage. Do not use the device if the power cord is damaged. If this cable is damaged, it must be replaced by customer service or a qualified electrician in order to avoid dangers.
- The supply cable must be disconnected from the socket only by pulling the plug.
- Never carry or lift the device by the supply cable.
- In any case do not open the device housing. In case of electrical or mechanical modifications the **electric shock hazard** will occur.
- Do not use any acid agents and make sure no water ingresses the device.
- **Never** operate the device with moist hands or standing on wet floor.
- Remove the plug from its socket:
 - when the device is not used,
 - in case of anomalies during operation,
 - before cleaning.



HOT SURFACE! Burn hazard!

To avoid the hazard results please follow the safety instructions below.

- The device surface during operation is very hot! In order to avoid burns of fingers and hands do not touch hot surfaces of the device! During operation touch only handles and operational elements designed for such purpose. Use the protective clothes or gloves.
- The device surface and liquids inside remain hot for some time after turning off, so before cleaning or moving the device wait until they cool down.



HOT STEAM! Hazard connected with contact with hot steam and hot water!

To avoid the hazard results please follow the safety instructions below.

- Do not exceed the maximum filling level! In case of overfilling the liquid may boil over or splash, leading to burns!
- Never remove the lid during heating! Released hot steam may cause burns of hands, arms, and face!

1.3 Proper use

The operational safety of the device is assured only in case of proper use, according to the operation manual.

All technical activities like installation and maintenance must be performed by the qualified service personnel only.

The device is intended for home use or in similar places such as:

- in kitchens for store or office employees or in similar business areas;
- in agricultural farms;
- by guests of hotels, motels and other typical places of accomodation;
- in Bed and Breakfast facilities.

Mulled wine pot / preserving pot is meant only for heating up and keeping the heat of liquids suitable for drinking, such as e.g. heated wine, tea, for preparing hot water and for preserving.

Do not use the **mulled wine pot / preserving pot** for:

- cooking food;
- warming up or heating of inflammable, volatilizing, noxious or similar fluids or materials.



CAUTION!

Any use going beyond the intended purpose and/or any different use of the device is forbidden and is not considered as conventional.

Any claims against the manufacturer or his authorized representative as a consequence of experiencing damages resulting from unconventional use are impossible.

The operator is liable for all damages resulting from inappropriate use.

2. General information

2.1 Liability and Warrantees

All the information and instructions in this manual take into account standard safety regulations, current levels of technical engineering as well as the expertise and experience we have developed over the years.

The instruction manual was translated with all due care and attention. However, we do not accept liability for any translation errors. The German version of this instruction manual is definitive.

If the delivery consists of a special model, the actual scope of delivery may differ from the descriptions and illustrations in this manual. This is also the case for special orders or when the device has been modified in line with new technology.



CAUTION!

Read this manual carefully and thoroughly before any operation of the device, and especially before turning it on!

Manufacturer **is not liable** for any damages or faults caused by:

- violation of advice concerning operation and cleaning;
- use other than designed;
- alterations made by user;
- use of inadequate spare parts.

We reserve the right to make technical changes for purposes of developing and improving the useful properties.

2.2 Copyright protection

The instruction manual including any texts, drawings, images or other illustrations is copyright. No part of this publication may be reproduced, transmitted or used in any form or by any means without permission in writing from the manufacturer. Any person who commits any unauthorized act in relation to this publication shall be liable to claims for damages. All rights reserved.



NOTE!

The contents, texts, drawings, pictures and any other illustrations are copyright and subject to other protection rights. Any person unlawfully using this publication is liable to criminal prosecution.

2.3 Declaration of conformity



The device complies with the current standards and directives of the EU. We certify this in the EC declaration of conformity. If required we will be glad to send you the according declaration of conformity.

3. Transport, packaging and storage

3.1 Delivery check

Please check the delivery upon completeness and transport damage immediately after receipt. In case of visible damage do not accept or accept the delivery with reservation only.

Note the extent of damage on the carrier's bill of delivery. Trigger off the complaint.

Hidden damages should be reclaimed immediately after notice, as claims for damages can only be asserted within the effective period for complaints.

3.2 Packaging

Please do not throw away the covering carton of your device as it might be useful for storage purposes, when moving or, in case of damages, when the device must be sent back to a repair center. The outer and inner packing material should be removed completely from the device before installation.



If you liked to dispose the packing, consider the regulations applicable in your country. Supply re-usable packing materials to the recycling.

Please inspect the device upon completeness. In case any part is missing please contact our customer service center immediately.

3.3 Storage

Keep the package closed until installation and under consideration of the outside indicated positioning- and storage markings.

Packages should be stored under consideration of the following:

- do not store outdoors,
- keep it dry and dust-free,
- do not expose it to aggressive media,
- do not expose it to direct sunlight,
- avoid mechanical shocks and vibration,
- in case of longer storage (> 3 months) make sure you check the state of the packaging and the parts regularly, if required refresh or renew.

4. Technical data

4.1 Overview of parts



- 1 Handle of lid
- 2 Glass cover
- 3 Container handle
- 4 Container
- 5 Red control light of connection to the mains
- 6 Green control light of heating
- 7 Temperature control
- 8 Feet
- 9 Device base
- 10 Small tap

Accessories



**Grid made of stainless steel
(included in the packaging)**



**Heat-retaining lid for cups
(not included in the packaging)**

Suitable for approx. 10 - 15 cups
Material: stainless steel
Ø 400 mm, Rim height: 39 mm
Weight: 0.76 kg

Code-No.: 200059

4.2 Technical specification

Description	Mulled wine pot / preserving pot	
Model:	GE 25	GE 30
Code-No.:	A200052	200057
Material:	Container: stainless steel; cover: glass; base, handles, small tap: plastic	
Connection:	2.0 kW / 230 V 50/60 Hz	
Temperature control:	30 °C - 100 °C	
Dimensions:	Ø 450 mm, height 470 mm	Ø 450 mm, height 520 mm
Capacity:	25 litres	30 litres
Weight:	6.1 kg	5.7 kg

We reserve the right to make technical changes!

5. Installation and operation

5.1 Installation

Positioning

- Unpack the device and remove all package materials according to the valid environment protection regulations.



CAUTION!

Never remove the nameplate and warning signs from the device.

- Put the device on an even, stable, dry and waterproof surface which is resistant to high temperature.
- **Never** place the device on an inflammable surface.
- **Never** place the device at the edge of a table to avoid accidents.
- **Never** place the device in humid or wet environment.
- **Never** use the device under hanging cupboards or shelves that may be damaged by hot steam.
- Place the device so that the plug is easily accessible so as to quickly disconnect the device if the need arises.

Connection



DANGER! Electric shock hazard!

The device can cause injuries due to improper installation! Before installation and connecting the local power grid specification should be compared with that of the device (see rating plate). Connect the device only in case of compliance!

Connect the device only to properly installed single socket with protective terminal.

- The electrical circuit in the socket must be secured to at least 16A. Only connect the device directly to the wall socket; do not use any extension cords or power strips.

5.2 Operation

- For hygiene reasons, before first use fill the device with approx. 6 litres of water, adjust for the highest temperature and boil for approx. 5 minutes. Then drain the container.
- After boiling, rinse the container with clean water and drain it again.
- Clean the glass cover thoroughly with warm water and a mild cleaning agent. Then rinse the cover with clean water and dry it thoroughly with the use of a soft cloth.
- Adjust the temperature control in the „0” position.



CAUTION!

It is important that there is always drinkable liquid in the container before engaging the device. You must not pour undrinkable liquids such as acids, bases or leys, oils, nitrates etc. in the mulled wine pot.

- Pour the desired drinkable liquid in the mulled wine pot/preserving pot. Minimum filling quantity of 5 litres.



CAUTION!

Never use the device when it is not filled with liquid!

- Put the plug in the power socket (the red control light will go on).



DANGER! Electric shock hazard!

During operation it must be ensured that no liquids can spill over as this can cause short-circuits in the electronic control. Personal injury can be the result.

Pay attention to the labels inside the container!

- Before starting the device, put the glass cover so as to avoid temperature loss in the container.



HOT STEAM! Danger of burn!

During taking the lid off there is a danger of burn by the escaping steam and condensate! Be particularly careful while doing this!

- With the use of the temperature control it is possible to adjust the temperature gradually from approx. 30°C - 100°C.
- Set the temperature control at the desired temperature by turning it clockwise (the green control light of heating will go on). When the desired temperature is reached, the control light goes off.



NOTE!

The heat is created via a heating coil in the bottom part of the mulled wine pot/ preserving pot. The electric temperature control with the temperature sensor are placed here as well. The adjustment of temperature is done via the thermostat switch.



NOTE!

The heating time depends on the liquid and the amount. When the desired liquid temperature is reached the thermostat shuts off automatically. In case the liquid temperature drops below the desired temperature the thermostat switches on to keep the liquid at the set temperature over a larger period of time.

- For tapping/drawing liquid turn the handle of the stop valve to the front. After finishing the tapping of liquid turn back the stop valve to its original position.
- Conditional on the system a quantity of approx. 1 litres remains in the container. This quantity can be slightly reduced by carefully tilting the container forward.



HOT SURFACE! Burn hazard!

While operating the mulled wine pot the surface of the container will be heated up according to the adjusted temperature! Do not touch hot surface!

- When the device is not in use, make sure you the temperature controller is turned all the way to the left as far as it will go, pull the power plug out of the socket, let the liquid drain and clean the container **after** it has cooled off.

Preserving

- The device can also be used for preserving foodstuffs in jars.
- Use the enclosed grid for putting the jars in the container. The grate helps a better circulation of the boiling water under and between the jars and at the same time a quicker heating of them.
- After putting the jars in the container pour so much water so that the jars are immersed to approx. 3/4 of their height.
- Connect the device to a suitable power socket.
- Set the preserving temperature. Read the temperature and the preserving time in a cookery book or in indications of a special recipe.

NOTE!

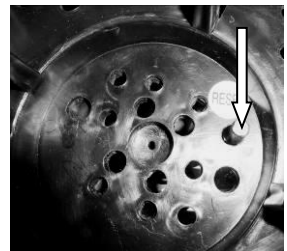
Pay attention to the fact that the heating time does not depend on the preserving time. The preserving time starts when the green control light of heating goes off for the first time.

- After preserving, disconnect the device from the power socket (take out the plug!).
- Take the jars out of the preserving pot. While doing that, use tongs for taking out jars or a cloth so as to avoid burning your hand
- Leave the water in the device to cool and then empty the pot.

CAUTION!

The device is equipped with **protection against overheating**. If the device happens to be empty when turned on, the overheating protection will be activated. Remove the plug from its socket and leave the device to cool for approx. 30 minutes. Let the liquid drain.

Next, press the **RESET** button located at the bottom of the device. The device is ready for use. In case the device does not work properly afterwards, contact you customer service.



6. Cleaning and descaling



WARNING!

Disconnect the device from the power supply (unplug!) before cleaning. Let the device cool down. Never clean the device with use of water jet! Be careful and do not let the water into the device.

- The device should be cleaned regularly.
- The surface of the device should be cleaned with a damp cloth. For tenacious stains a mild detergent can be used. **Do not** use any sprays or aggressive detergents.
- Clean the device thoroughly inside and rinse it with clean water.
- Only use a soft cloth and make sure you **never** use any kind of abrasive agents or pads which could scratch the surface.
- Do not use steel wool for cleaning purposes. Parts of the steel wool can loosen and settle in the stop valve and lead to damages of the seal faces.
- If the device is used daily the whole faucet mechanism has to be cleaned once a week. If the device is used less often, it may be cleaned less frequently. For cleaning the faucet bonnet unscrew bonnet, remove silicone seat cup and wash the parts in warm soapy water. Clean the inside of the faucet and the connection to the device by using a small bottle brush.



CAUTION!

Never insert the brush in the assembled faucet since it will puncture the seat cup.

- **Never** use any kind of inflammables for cleaning purposes as, in case of reconnection, this increases the risk of fire and explosion.

- In the case of water containing lime, a calcareous layer, which can have an influence on the heating power of the device appears in the container, particularly at the bottom of it. It is possible to remove this residue carefully by adding to water a drop of vinegar or a lime remover available on the market and by boiling this solution for a short time.
- After removing lime rinse the container with clean water.
- After cleaning you should apply a soft, dry cloth in order to wipe dry and polish the surface.



CAUTION!

Complaints will not be accepted if the device is not decalcified regularly as described in the instruction manual.

Such complaints are no cases of warranty!

Storage of the device

- If the device is not used for any lengthy period of time, clean it according to the aforementioned description and store it in dry, clean place protected against cold, sun and children. Do not place any heavy objects on the device.

7. Waste disposal

Discarding old devices

At the end of its service life the discarded device has to be disposed in accordance with the national regulations. It is advisable to contact a company which is specialized in waste disposal, or just contact the local disposal service in your community.



WARNING!

To exclude any abuse and the dangers involved make the waste device unfit for use before disposal.

For that purpose disconnect device from mains supply and remove mains connection cable from the device.



CAUTION!



For the disposal of the device please consider and act according to the national and local rules and regulations.