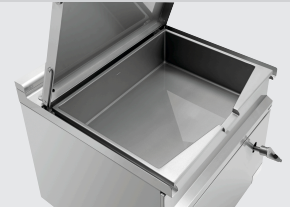




- ▶ Pan made of CNS
- ✓ Contents: 80 litres
- ✓ Water intake fitting



- ▶ Temperature range: 45 °C to 300 °C
- ▶ Heating resistors made of "Incoloy 800"
- ▶ Interruption of the power supply in case of fault



- ▶ Manual tilt device



- Power load: 9,9 kW | 400 V | 50 Hz
- Equipment connection: 3 NAC
- Control lamp: yes
- Temperature range: 45 °C to 300 °C
- Content: 80 litre(s)
- Series: -
- Water supply tap: Yes
- Material crucible: Chrome-nickel steel
- Size crucible: W 798 x D 570 x H 200 mm
- Tilting device: Manual
- Height-adjustable feet: Yes
- Height adjustable: 850 mm to 910 mm
- Properties: Power supply interruption in case of malfunction  
Heating resistors from "Incoloy 800"
- Operating mode: Electro
- Material: CNS 18/10
- Important information: -
- Useful content: 70 litre(s)
- Water connection: 12 mm
- Size: W 900 x D 900 x H 900 mm
- Weight: 158 kg

### Power cleaner F1L, set of 2



- Designed for: Stubborn dirt, especially in kitchens  
Grill and combi steamer cleaning (without cleaning system)
- Content: 2 x 1 litre
- Model: Liquid  
High concentrate
- Ph level: 13,5
- HACCP compliant: Yes
- Chlorine-free: Yes
- Phosphate-free: Yes

Code-No. 173078  
GTIN 4015613731926

### Intensive power cleaner F1L, set of 2



- Order quantity unit: 1 box (2 bottles)
- Content: 2 x 1 litre
- Ph level: 14
- HACCP compliant: Yes
- Chlorine-free: Yes
- Phosphate-free: Yes
- Including: 1 spray head  
1 spray lance
- Important information: Attention: Not suitable for surfaces sensitive to alkali such aluminium  
Exclusively available in Germany and Austria

Code-No. 173080  
GTIN 4015613731933