

KV1



190060

Bartscher GmbH
Franz-Kleine-Str. 28
D-33154 Salzkotten
Germany

Phone: +49 5258 971-0
Fax: +49 5258 971-120
Service hotline: +49 5258 971-197
www.bartscher.com

Version: 1.0

Date of preparation: 2019-08-21

Original instruction manual

Technical Specifications

Name:	Dregs ejector chute KV1
Item No.:	190060
Material:	Plastic
Dimensions (W x D x H), in mm:	80 x 155 x 160
Weight in kg:	0,92

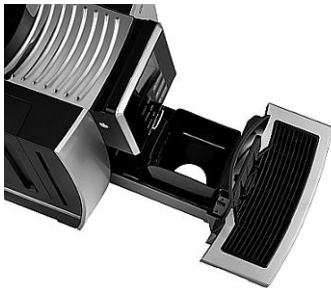
We reserve the right to implement technical modifications!

Version / Characteristics

- Designed for:
 - Bartscher KV1 coffee machine
 - disposing of dregs directly into the waste bin
- Thanks to employment of dregs ejector chute with discharge opening, there is no need to empty the dregs container of the KV1 coffee machine.

Installation

1. Prepare a recess for discharge opening of the dregs ejector chute in a surface, where the coffee machine is to be installed. Take the size of recess in coffee machine bottom plate into account.
2. Remove a drip tray from the coffee machine.
3. Set the coffee machine so that the recess in a surface, where the coffee machine is to be installed, and the opening in the appliance bottom plate are aligned against one another.
4. Insert the enclosed auxiliary positioning tool into the opening.
5. Place a collecting container under the opening.
6. Insert the dregs ejector chute with discharge opening with the recess towards the appliance drip tray, to automatically remove dregs.



Change of Setting in KV1 Coffee Machine

When the dregs ejector chute with discharge opening is installed, settings must be changed.



Proceed in the following way:



1. Before commencing regulation, go to main menu of the coffee machine.

EN



2. To go to service menu, press the  Return and the  buttons concurrently. The appliance goes to the main menu for a moment, but both buttons need to remain pressed.



3. In the service menu use **▲** or **▼** buttons, to select “Automatic slugs” and confirm with OK.



4. Use **▲** or **▼** buttons, to select “YES” and confirm with OK.
5. Press the **↵** Return button, to return to main menu.