



▶ Designed for cheese and cold meats



▶ Efficient residues holder



▶ Easy cleaning



▶ Clean cold meats guide



▶ Practical knife sharpener



▶ Simple and safe replacement of the blade using the supplied tool

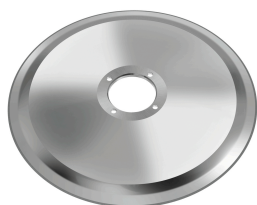


Powerful and low maintenance – motorised slicer for demanding use in large kitchens and butcher shops. Designed for cutting cheese and cold meats.

- Control lamp: ON/OFF
- Power load: 0,4 kW | 230 V | 50 Hz
- ON/OFF switch: Yes
- Diameter knife: 300 mm
- Rpm max.: 270 r. / min.
- With knife sharpener: Yes
- Length cable: 1,5 m
- Control unit: Toggle
- Solenoid switch: No
- Cutting guide: Yes
- Holder for remainders: Yes
- Material: Aluminium
- Important information: -
- Design: Oblique cutter / gravity slice
Motorised machine
- Cutting thickness: 1 - 30 mm
- Cutting length: 250 mm
- Cutting height: 220 mm
- Carriage design: 2 handles
Detachable
Chrome-plated
- Blade guard: Single
- Protection class: IP 33
Switch IP 67
- Designed for: Cheese
Sausage
Ham
- Including: 1 Knife 300 Basic
1 tool for blade replacement
- Size: W 547 x D 615 x H 545 mm
- Weight: 36 kg



Knife 300 Basic



- Diameter knife: 300 mm
- Design knife: Standard
- Designed for: Sausage
- Material: Stainless steel
Hard chrome-plated
- Important information: -
- Size: W 300 x D 300 x H 23 mm
- Weight: 2.1 kg

Code-No. 174033
GTIN 4015613702308

Blade 300, serrated blade



- Diameter knife: 300 mm
- Design knife: Corrugated edge
- Designed for: Sausage
- Important information: -
- Material: Stainless steel
Hard chrome-plated
- Size: W 300 x D 300 x H 23 mm
- Weight: 2.1 kg

Code-No. 174058
GTIN 4015613658339

Blade 300, non-stick coated



- Diameter knife: 300 mm
- Design knife: Non-stick coating
- Material: Stainless steel
Teflon-coated
- Important information: -
- Designed for: Sausage
- Size: W 300 x D 300 x H 23 mm
- Weight: 2.1 kg

Code-No. 174059
GTIN 4015613658346

Oil and grease remover F1L



- Content: 6 x 1 litre
- Model: Liquid
- HACCP compliant: Yes
- Chlorine-free: Yes
- Phosphate-free: Yes
- Including: -
- Order quantity unit: 1 box (6 bottles)
- Designed for: Wipe-off work surfaces, stainless steel surfaces
Tiled walls and floors
Highly effective against deposits in coffee cans
Machines, appliances

Code-No. 173276
GTIN 4015613761176