



- ▶ Designed for:
 - ✓ 3 x GN 1/1 depth
 - ✓ Max. depth of GN container: 150 mm

- ▶ Prepared for attachment of matching tray chute on both sides



Cold food perfectly presented.
The buffet cart is optimally equipped with integrated lighting, sneeze guard with shelf function and wheels for convenient transport.

- Cooling: Static
- Coolant: R290 / 0,050 kg
- Power load: 0,236 kW | 230 V | 50 Hz
- Number of tanks: 1
- Temperature range: 2 °C to 10 °C
- Basin size, GN format: 3 x 1/1 GN
- Control lamp: ON/OFF
- Drain cock: No
- Germ guard: Yes
- Lighting: On the germ guard
- Delivery state: Building kit (simple assembly)
- Swivel casters: 4 swivel casters, 2 with brake
- Colour: Teak
- Not included in delivery: GN containers
- Depth GN container max.: 150 mm
- Material: Wood
- Important information: -
- Properties: Work surface made of Granit Rosa Porrino
Stainless steel sink
- Size: W 1,170 x D 880 x H 1,370 mm
- Weight: 127.8 kg

GN-container, 1/1GN,D150, Basic Line

CNS



- Content: 21 litre(s)
- Stackable: Yes
- Design: No perforation
- Reinforced edge: No
- Surface: Silk matt
- Depth container: 150 mm
- Gastronorm: 1/1 GN
- Norm: EN 631
- Series: Basic Line
- Material: Chrome-nickel steel
- Important information: -

Code-No. 711150
GTIN 4015613695600

GN-container, 1/2GN,D150, Basic Line

CNS



- Content: 9,5 litre(s)
- Stackable: Yes
- Design: No perforation
- Reinforced edge: No
- Surface: Silk matt
- Depth container: 150 mm
- Gastronorm: 1/2 GN
- Norm: EN 631
- Series: Basic Line
- Material: Chrome-nickel steel
- Important information: -

Code-No. 712150
GTIN 4015613695723

GN-container, 1/3GN,D150, Basic Line

CNS



- Content: 5,75 litre(s)
- Stackable: Yes
- Design: No perforation
- Reinforced edge: No
- Surface: Silk matt
- Depth container: 150 mm
- Gastronorm: 1/3 GN
- Norm: EN 631
- Series: Basic Line
- Material: Chrome-nickel steel
- Size: W 325 x D 176 x H 150 mm

Code-No. 713150
GTIN 4015613695792

GN container, 1/1, D150

CNS
18/10



- Content: 21 litre(s)
- Stackable: Yes
- Design: No perforation
- Reinforced edge: No
- Properties: -
- Surface: High-gloss
- Depth container: 150 mm
- Gastronorm: 1/1 GN
- Norm: EN 631
- Series: Top Line
- Important information: -

Code-No. A120610
GTIN 4016098101204

Buffet trolley, cold, 3x 1/1 GN

Add on Products

GN container, 1/2, 150mm, 9,5 L

CNS
18/10



- Content: 9,5 litre(s)
- Stackable: Yes
- Design: No perforation
- Reinforced edge: No
- Properties: -
- Surface: High-gloss
- Depth container: 150 mm
- Gastronorm: 1/2 GN
- Norm: EN 631
- Series: Top Line
- Important information: -

Code-No. A120620
GTIN 4015613278988

GN container, 2/4, D150

CNS
18/10



- Content: 9 litre(s)
- Stackable: Yes
- Design: No perforation
- Reinforced edge: No
- Properties: -
- Surface: High-gloss
- Depth container: 150 mm
- Gastronorm: 2/4 GN
- Norm: EN 631
- Series: Top Line
- Important information: -

Code-No. A128150
GTIN 4015613271156

GN container, 1/3, D150

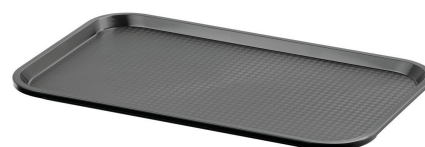
CNS
18/10



- Content: 5,75 litre(s)
- Stackable: Yes
- Design: No perforation
- Reinforced edge: No
- Properties: -
- Surface: High-gloss
- Depth container: 150 mm
- Gastronorm: 1/3 GN
- Norm: EN 631
- Series: Top Line
- Important information: -

Code-No. A123150
GTIN 4016098101266

Tray GN110-S



- Colour: Black
- Important information: -
- Dishwasher safe: Yes
- Stackable: Yes
- Dimensions surface: W 495 x D 290 mm
- Worktop surface: Structured
- Norm format: 1/1 GN
- Material: Plastic (polypropylene)
- Properties: -
- Size: W 530 x D 325 x H 20 mm
- Weight: 0.59 kg

Code-No. 701053
GTIN 4015613695303

Tray KN45350-HG



- Colour: Light grey
- Worktop surface: Structured
- Stackable: Yes
- Dishwasher safe: Yes
- Properties: -
- Material: Plastic (polypropylene)
- Important information: -
- Norm format: Canteen norm
- Dimensions surface: W 415 x D 315 mm
- Size: W 450 x D 355 x H 20 mm
- Weight: 0.39 kg

Code-No. 701054
GTIN 4015613695310

Tray trolley TT1600

CNS



48 kg



- Can be loaded from both sides: Yes
- Worktop surface: Yes, with railing
- Delivery state: Building kit (simple assembly)
- Swivel casters: 4 swivel casters, 2 with brake
- Diameter casters: 125 mm
- With handle(s): Yes
- Material: Chrome-nickel steel
- Important information: -
- Properties: -
- Including: -
- Total load-bearing capacity, max.: 48 kg

Code-No. 300083
GTIN 4015613587615