

# Core temperature sensor set 1KA

**Bartscher**



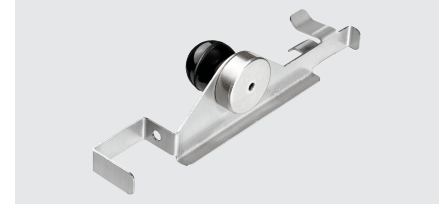
► Designed for the combi-steamers in the Silversteam



► Cable length of core temperature sensor: 1.8 m



Retention: Magnetic



Core temperature sensor set as an ideal supplement to the Bartscher combi-steamers. The magnetic retention mechanism allows easy attachment to these all-round units.

- Set comprises: 1 core temperature sensor  
1 holder
- Length cable: 1,8 m
- Material temperature sensor: Stainless steel
- Important information: -
- Designed for: Combi steamers series Silversteam
- Size: W 180 x D 265 x H 25 mm
- Weight: 0.57 kg