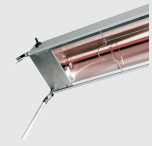




▶ Heat source: infrared heating tube



▶ Thermal bridge width: 760 mm

▶ Prepared for the assembly of feet or a chain



Infrared thermal bridge - variable, as stand-alone unit or suspended to ceiling

- Not included in delivery: Feet, chain
- Power load: 0,65 kW | 230 V | 50/60 Hz
- Height-adjustable feet: No
- Control lamp: -
- Germ guard: No
- Delivery state: Permanently mounted
- Heat source type: Infrared heated tube(s)
- Design: Can be mounted
- Including: -
- Important information: -
- Number of heated tubes: 1
- ON/OFF switch: Yes
- Properties: Prepared for the assembly of feet or a chain
- Output per heated tube: 0,65 kW
- Clear height: 360 mm
- Material: Aluminium  
Stainless steel
- Size: W 760 x D 225 x H 65 mm
- Weight: 2.8 kg



### Food warmer feet, pair



- Important information: -
- Size: W 270 x D 25 x H 425 mm
- Weight: 0.72 kg

Code-No. 114000  
GTIN 4015613452258