



Series 650 - a range of cooking equipment for the professional kitchen. The series is defined by optimum energy use, powerful appliances, and ease of cleaning. The modular design means that the appliances are easy to combine and can be arranged flexibly. The appliance structure consists entirely of 18/10 stainless steel.

- Sub-counter unit type: Open
- Material: CNS 18/10
- Important information: -
- Height adjustable: 560 mm to 660 mm
- Height-adjustable feet: Yes
- Series: 650
- Size: W 700 x D 535 x H 560 mm
- Weight: 12.4 kg

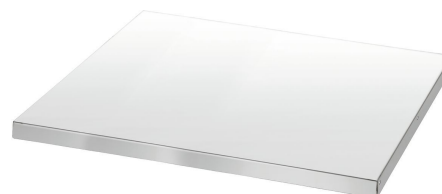
Device linking strip 650



- Important information: -
- Size: W 20 x D 575 x H 8 mm
- Weight: 0.17 kg

Code-No. 110036
GTIN 4015613215785

Shelf 650, W700



- Material: Chrome-nickel steel
- Important information: -
- Size: W 660 x D 527 x H 30 mm
- Weight: 2.65 kg

Code-No. 112032
GTIN 4015613560021

Stainl.steel polish.spray 500ml can



- Content / can: 500 ml
- Application: Remove heavy soiling such as grease residue first
Do not spray onto hot surfaces
- allow them to cool down first:
- Application: Before use, bring the can to room temperature and shake well
Spray sparingly onto the surfaces to be cleaned

Rub evenly over the entire surface
Polish with a dry cloth

Code-No. 173031
GTIN 4015613360195