



- ▶ Output / hour max.: 60 baskets
- ▶ Run-time: 60 / 90 / 120 / 180 seconds



- ▶ Rinsing agent dosing pump
- ▶ Double-walled door
- ▶ Can be fitted below the counter

- ▶ Option of cleaning pots and bowls with rinsing grille 500

This high-performance dishwasher achieves the best cleaning results thanks to the optimised rinse arm with innovative nozzle layout. In combination with rinsing grille 500, the machine is also suitable for cleaning pots and bowls.

- |  |   |
|--|---|
| <ul style="list-style-type: none"> <li>• Plate height max.: 345 mm</li> <li>• Door double-walled: Yes</li> <li>• Can be fitted below the counter: Yes</li> <li>• Glasses height max.: 320 mm</li> <li>• Power load: 5,06 kW   400 V   50 Hz</li> <li>• Equipment connection: 3 NAC</li> <li>• Boiler heater: 4,5 kW</li> <li>• Tank heater: 2,7 kW</li> <li>• Water outlet: Ø 50 mm</li> <li>• Dry-run protection: Yes</li> <li>• Control lamp: ON/OFF Heat up</li> <li>• ON/OFF switch: Yes</li> <li>• Lye pump: No</li> <li>• Water softener: No</li> <li>• Clear rinsing dosing pump: Yes</li> <li>• Door contact switch: Yes</li> <li>• Cleaning agent dosing pump: No</li> <li>• Basket dimensions: 500 x 500 mm</li> <li>• Run-time: 60 / 90 / 120 / 180 seconds</li> <li>• Output / hour max.: 60 baskets</li> <li>• Self-cleaning: No</li> <li>• Cold rinsing: No</li> <li>• Double-walled: No</li> <li>• Tank volume: 29 litre(s)</li> <li>• Water pressure: 2 - 4 bar</li> <li>• Water supply: G 3/4"</li> <li>• Including: 1 glasses basket<br/>1 plate basket</li> </ul> | <ul style="list-style-type: none"> <li>• Including: 1 cutlery holder<br/>Spare sealing ring supply hose<br/>CNS 18/10</li> <li>• Material: -</li> <li>• Important information: -</li> <li>• Safety thermostat: Yes</li> <li>• Number of wash programs: 4</li> <li>• Properties: Easy-clean rinse arm<br/>Option of cleaning pots and bowls with rinse grid 500<br/>Surface strainer</li> <li>• Water intake temperature: 55 °C</li> <li>• Display: Boiler temperature and status<br/>Tank temperature and status</li> <li>• Water consumption at 2 bar: 2.3 litres / wash cycle</li> <li>• Size: W 595 x D 630 x H 845 mm</li> <li>• Weight: 59 kg</li> </ul> |
|--|---|

# Dishwasher TF517

## Add on Products

### Water softening system WEH1350



- Power load: 0,03 kW | 230 V | 50/60 Hz
- Digital display: Yes
- Water intake temperature from: 5 °C
- Water intake temperature to: 40 °C
- Setting possibilities:
  - Interval
  - Regeneration
  - Language
  - Time
  - Water hardness
- Regeneration: Flow rate or time period
- Water connection: 3/4"

Code-No. 109889  
GTIN 4015613615158

### Full desalination system VK 500 FB



- Desalination type: Full desalination
- Water connection: 3/4"
- Colour: Blue
- Connection capacity: 1 unit
- Output capacity: 5,000 litres / cartridge at 10° d (total salt content)
- Material:
  - Plastic
  - Glass-fibre reinforced
- Important information: -
- Deposit per cartridge: 290 €
- Sampling tap: Yes

Code-No. 109877  
GTIN 4015613681580

### Glass polisher



- Number of polishing heads: 5
- Power load: 1,1 kW | 230 V | 50 Hz
- Polishing/drying type: Microfibre polishing scarves with hot air fans
- Properties: Microfibre polishing scarves detachable
- Including: -
- Material:
  - Stainless steel
  - Microfibre
- Important information: -
- ON/OFF switch: Yes
- Control lamp: -
- Size: W 340 x D 305 x H 520 mm

Code-No. 109470  
GTIN 4015613455624

### Stainl.steel polish.spray 500ml can



- Content / can: 500 ml
- Application:
  - Remove heavy soiling such as grease residue first
  - Do not spray onto hot surfaces
- allow them to cool down first:
- Application:
  - Before use, bring the can to room temperature and shake well
  - Spray sparingly onto the surfaces to be cleaned
  - Rub evenly over the entire surface
  - Polish with a dry cloth

Code-No. 173031  
GTIN 4015613360195

# Dishwasher TF517

## Add on Products

### Dishwasher cleaner P5kg



- Designed for: Commercial dishwashers  
Household dishwashers
- Model: Powder
- Ph level: 12
- HACCP compliant: Yes
- Chlorine-free: No
- Phosphate-free: No
- Application: Dosing: Manual, according to the machine manufacturer's instructions  
Application concentrations: 2 - 4 g per litre of water depending on water hardness

Code-No. 173074  
GTIN 4015613731872

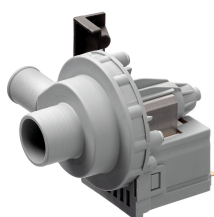
### Rinsing agent F10kg



- Designed for: Commercial dishwashers  
Household dishwashers  
Combined steamer
- Model: Liquid
- Ph level: 2,1
- HACCP compliant: Yes
- Chlorine-free: Yes
- Phosphate-free: Yes
- Important information: Keep out of the reach of children!  
Exclusively available in Germany and Austria  
Safety data sheet available on request

Code-No. 173072  
GTIN 4015613731865

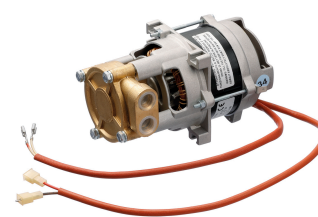
### Drain pump set LPS40



- Power load: 0,25 kW | 230 V | 50 Hz
- Properties: -
- Material: Plastic
- Important information: -
- Designed for: Dishwasher Deltamat TF 517
- Set comprises: 1 pump  
1 hose, rubber  
3 hoses, plastic  
Installation material
- Size: W 265 x D 265 x H 235 mm
- Weight: 1.3 kg

Code-No. 109566  
GTIN 4015613721316

### Pressure booster pump set DSS10



- Power load: 0,15 kW | 230 V | 50 Hz
- Important information: -
- Material: Plastic
- Properties: -
- Designed for: Dishwasher Deltamat TF641, TF641LP  
Dishwasher Deltamat TF50, TF50L, TF50LR  
Dishwasher Deltamat TF517, TF517LP  
Dishwasher Deltamat TF526R, TF526LPR,  
TF526LPWR
- Set comprises: 1 pump (W 100 x D 175 x H 110 mm, 1.5 A)  
1 condenser (W 35 x D 120 x H 35 mm)

Code-No. 109562  
GTIN 4015613721279

### Dishwasher basket trolley ASP700

STAINLESS  
STEEL



100 kg



- Can be loaded from both sides: Yes
- Designed for: Dishwasher baskets 500 x 500 mm
- Worktop surface: No
- Properties: Frame in square tubing 25 x 25 mm  
One basket guard each on the front and back
- Including: -
- Model: Slots
- Application area: Clearing  
Storage
- Total load-bearing capacity, max.: 100 kg
- With handle(s): No

Code-No. 300147  
GTIN 4015613709178

### Rinsing agent F10L



- Model: Liquid
- HACCP compliant: Yes
- Chlorine-free: Yes
- Phosphate-free: Yes
- Including: -
- Content: 10 litres
- Designed for: Commercial dishwashers  
Household dishwashers  
Combi steamer with rinsing program
- Application: Application concentrations: 0.2 - 0.4 g per litre  
of rinsing water depending on water hardness

Code-No. 173272  
GTIN 4015613767901