

3000/25



110437

Bartscher GmbH
Franz-Kleine-Str. 28
D-33154 Salzkotten
Germany

Phone: +49 5258 971-0
Fax: +49 5258 971-120
Service hotline: +49 5258 971-197
www.bartscher.com

Version: 1.0

Date of preparation: 2022-01-06

Original instruction manual

Technical Data

Name:	Noise-insulating hood 3000/25
Art. No.:	110437
Material:	stainless steel
Designed for:	Cutlery polishing machine 3000/25
Dimensions (W x D x H), in mm:	635 x 435 x 345
Weight, in kg:	7,0

We reserve the right to implement technical modifications.

Operation

The noise-insulating hood reduces the background noise created when cutlery is finely polished using cutlery polishing machine 3000/25 (110432).

The set includes:

- filling chute with noise insulation
- noise-insulating mat for cutlery basket



Fig. 1

Assembly



Fig. 2

1. Remove interlocking screws in the top section of the cutlery polishing machine front panel.



Fig. 3

2. Fix both plastic spacer elements, delivered with the noise-insulating hood.
3. Perform the same action on both sides of the cutlery polishing machine by interlocking the spacer elements (Fig. 3).



Fig. 4

4. In order to facilitate the assembly, remove the screw at one side only, as shown in Fig. 4.



Fig. 5

5. Fix the noise-insulating hood on the cutlery polishing machine, as shown in Fig. 5:

- when the appliance is on a tabletop, fix the noise-insulating hood with the use of bottom openings.
- when the appliance is on a base, hook the noise-insulating hood with the use of top openings.



Fig. 6

6. Lift the noise-insulating hood and fix the transverse bar, as shown in Fig. 6:

- when the appliance is on a tabletop, fix the transverse bar with the use of bottom openings.
- when the appliance is on a base, fix the transverse bar with the use of top openings.

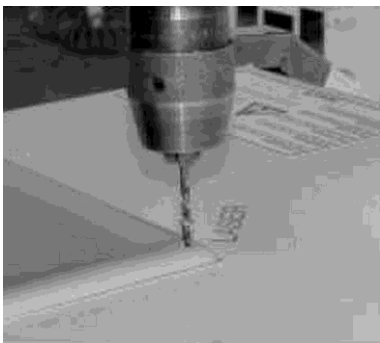


Fig. 7

7. To remove rivets fixing the standard chute, use a power drill. Use a drill bit with the diameter of 3.25 mm.



Fig. 8

8. Remove the standard chute.
9. Prepare the special filling chute, which is equipped with a sound-suppressing rubber.



Fig. 9

10. Place the chute, making sure the rubber is aligned as shown in the figure.



Fig. 10

11. Fix the placed chute with new rivets at the side opposite to the rubber.



Fig. 11

12. Insert the frame and fix the chute also at the rubber side.

Overview after assembly

inside



Fig. 12

outside

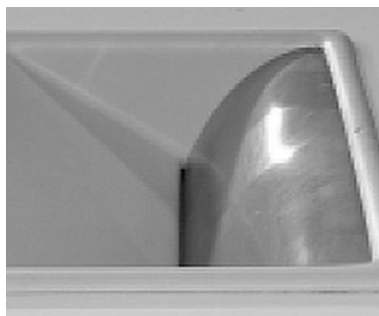


Fig. 13

The appliance with noise-insulating hood

EN



Fig. 14