



- ▶ A flexible all-rounder
- ✓ 1 niche
- ✓ Utility surface: W 760 x D 590 mm
- ✓ Designed for max. 2 table-top appliances



- ▶ Diverse appliance combinations thanks to optional extra shelves



- ▶ Possible connection of two or more Snackpoint 200s

- ✓ Shortened glass shelf available as optional extra



- ▶ Glass shelves (safety glass), rounded on server side



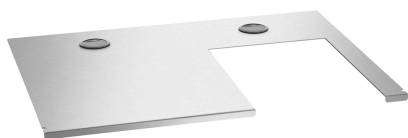
- ▶ Magnetic stainless steel front can be used for advertising

- ▶ 2 cable ducts

Really flexible food preparation and serving. Snackpoint 200 enables food preparation and serving with maximum variability: From the hot dog stand to the grill station to the coffee bar - the mobile station is quickly and easily converted and perfectly adapted for the next use.

- Number of niches: 1
- With glass top: Yes
- Size glass superstructure: W 790 x D 200 x H 300 mm
- Properties placement niche: Height-adjustable insert shelf: 3 heights
Surface: W 760 x D 590 mm
Can be fitted with optional extra insert shelves
- Equipped with: Storage compartment below the setting niches, dimensions: W 755 x D 580 mm
- Swivel casters: 4 swivel casters, 2 with brake
- Material: Stainless steel
- Important information: -
- Including: Glass top
2 connection elements
Moveable shelf reinforcement for optional extra insert shelves
- Properties: 2 cable ducts
Magnetic stainless steel front can be used for advertising
Glass shelves (safety glass), rounded on server side
Diverse appliance combinations thanks to optional extra shelves
Possible connection of two or more Snackpoint 200s
- Size: W 800 x D 600 x H 1,225 mm
- Weight: 42.3 kg

Insert shelf M1 Snackpoint 200



- Size utility space: W 375 x D 575 mm
- Cut-out: Designed for deep-fat fryer SNACK III Plus
Dimensions: W 380 x D 280 mm
- Properties: 2 cable ducts
- Material: Stainless steel
- Important information: -
- Size: W 755 x D 578 x H 15 mm
- Weight: 3.7 kg

Code-No. 107302
GTIN 4015613761770

Insert shelf M2 Snackpoint 200



- Cut-out 1: Designed for induction cooker IK 30S-EB
Dimensions: W 270 x D 490 mm
- Cut-out 2: Designed for GN 1/1 bain-marie, 150 mm
Dimensions: W 345 x D 545 mm
- Properties: Ventilation holes
- Material: Stainless steel
- Important information: -
- Size: W 755 x D 578 x H 15 mm
- Weight: 1.4 kg

Code-No. 107303
GTIN 4015613761787

Insert shelf M3 Snackpoint 200



- Cut-out 1: Designed for the griddle plate GDP 320E-G
Dimensions: W 330 x D 550 mm
- Cut-out 2: Designed for GN 1/1 bain-marie, 150 mm
Dimensions: W 345 x D 545 mm
- Properties: Ventilation holes
- Material: Stainless steel
- Important information: -
- Size: W 755 x D 578 x H 15 mm
- Weight: 0.78 kg

Code-No. 107304
GTIN 4015613761794

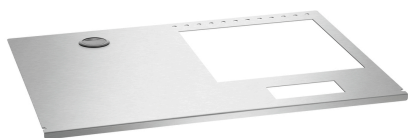
Insert shelf M4 Snackpoint 200



- Cut-out 2: Designed for GN 1/1 bain-marie, 150 mm
Dimensions: W 345 x D 545 mm
- Cut-out 1: Designed for GN 1/1 bain-marie, 150 mm
Dimensions: W 345 x D 545 mm
- Properties: -
- Material: Stainless steel
- Important information: -
- Size: W 755 x D 578 x H 15 mm
- Weight: 0.77 kg

Code-No. 107305
GTIN 4015613761800

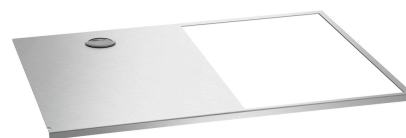
Insert shelf M5 Snackpoint 200



- Size utility space: W 375 x D 575 mm
- Material: Stainless steel
- Important information: -
- Cut-out: Designed for induction wok IW35-EB
Dimensions for wok: W 330 x D 350 mm
Dimensions for control panel: W 150 x D 70 mm
- Properties: 1 cable duct
Ventilation holes
- Size: W 755 x D 578 x H 15 mm
- Weight: 3.5 kg

Code-No. 107306
GTIN 4015613761817

Insert shelf M6 Snackpoint 200



- Size utility space: W 375 x D 575 mm
- Properties: 1 cable duct
- Material: Stainless steel
- Important information: -
- Cut-out: Designed for GN 1/1 bain-marie, 150 mm
Dimensions: W 345 x D 545 mm
- Size: W 755 x D 578 x H 15 mm
- Weight: 2.9 kg

Code-No. 107307
GTIN 4015613761824

Insert shelf M7 Snackpoint 200



- Size utility space: W 755 x D 578 mm
- Properties: 1 cable duct
- Material: Stainless steel
- Important information: -
- Size: W 755 x D 578 x H 15 mm
- Weight: 5 kg

Code-No. 107308
GTIN 4015613761831

Glass shelf VB Snackpoint 200



- Material: Glass
- Properties: With pre-drilled holes
- Important information: Two glass shelves are required per connection
- Size: W 195 x D 6 x H 300 mm
- Weight: 0.84 kg

Code-No. 107309
GTIN 4015613761848

Deep fat fryer SNACK III Plus



STAINLESS STEEL

9L



- Heating element in stainless steel: Yes
- Power load: 3,3 kW | 230 V | 50/60 Hz
- Equipment connection: Pluggable
- Heating element: Can be swivelled
- Size basket: W 210 x D 220 x H 120 mm
- Basket content: 5,5 litre(s)
- Grease collection tank: No
- Series: -
- Colour: Stainless steel
- Type: Table-top unit
- Operating mode: Electro

Code-No. A162823E
GTIN 4015613718897

Built-in induction cooker IK 30S-EB



3,0 kW



- Arrangement of the hobs: Behind each other
- Power load: 3 kW | 230 V | 50 Hz
- Equipment connection: Pluggable
- Control unit: Electronic Touch
- Number of hobs: 2
- Type of hobs: Induction
- Overheating protection: Yes
- Digital display: Yes
- ON/OFF switch: Yes
- Colour: Black

Code-No. 105936S
GTIN 4015613607061

Griddle plate GDP 320E-G



CNS 18/10



- Power load: 3 kW | 230 V | 50 Hz
- Equipment connection: Pluggable
- Type: Table-top unit
- Safety thermostat: Yes
- Temperature range: 50 °C to 300 °C
- Number of heating zones: 1
- Size heating surface: W 320 x D 480 mm
- Roasting surface design: Smooth
- Including: 1 cleaning scraper
- Operating mode: Electro
- Material: CNS 18/10

Code-No. A370031
GTIN 4015613370545

Built-in induction wok IW35-EB



STAINLESS STEEL

3,5 kW



- Temperature range: 60 °C to 240 °C
- Material: Stainless steel
- Material hob: Glass ceramic
- Type of hobs: Induction
- Series: -
- Control unit: Toggle
- Equipment connection: Pluggable
- Overheating protection: Yes
- Digital display: Yes
- ON/OFF switch: No
- Pot recognition: Yes

Code-No. 105997
GTIN 4015613715766

Automatic coffee machine KV1 Classic



- Decalcification signal: Yes
- ON/OFF switch: Yes
- Water tank capacity: 1,8 litre(s)
- Detachable water tank: Yes
- Programs: 6, individually adjustable
- Automatic turn-off: Yes
- Grinding mechanism: Cone grinder
- Grinder material: Steel
- Pressure system: Piston pressure
- Power load: 2,7 kW | 230 V | 50/60 Hz
- Material: Plastic

Code-No. 190052
GTIN 4015613712741

Cup warmer TA720



- Power load: 0,14 kW | 230 V | 50/60 Hz
- Capacity cups max.: 72
- Material: Stainless steel
- Important information: -
- ON/OFF switch: Yes
- Temperature range to: 60 °C
- Properties: With worktop surface, dimensions: W 250 x D 250 mm
- Size utility space: W 280 x D 295 mm
- Height inside, each: 175 mm
- Safety thermostat: Yes

Code-No. 103076
GTIN 4015613708867

Bain Marie, 1/1GN, 150mm, w. faucet



- Power load: 1,2 kW | 230 V | 50/60 Hz
- Type: Table-top unit
- Number of tanks: 1
- Water connection: -
- Depth GN container max.: 150 mm
- Series: -
- Water supply tap: No
- Water drain tap: Yes
- Operating mode: Electro
- Material: Chrome-nickel steel
- Important information: -

Code-No. 200240
GTIN 4015613468969

Stainl.steel polish.spray 500ml can



- Content / can: 500 ml
- Application: Remove heavy soiling such as grease residue first
Do not spray onto hot surfaces
- allow them to cool down first:
- Application: Before use, bring the can to room temperature and shake well
Spray sparingly onto the surfaces to be cleaned

Rub evenly over the entire surface
Polish with a dry cloth

Code-No. 173031
GTIN 4015613360195

Power cleaner F1L, set of 2



- Designed for: Stubborn dirt, especially in kitchens
Grill and combi steamer cleaning (without cleaning system)
- Content: 2 x 1 litre
- Model: Liquid
High concentrate
- Ph level: 13,5
- HACCP compliant: Yes
- Chlorine-free: Yes
- Phosphate-free: Yes

Code-No. 173078
GTIN 4015613731926

Cup warmer TA1440



- Size utility space: W 285 x D 335 mm
- Height inside, each: 180 mm
- Power load: 0,3 kW | 230 V | 50 Hz
- Temperature range: 30 °C to 60 °C
- ON/OFF switch: Yes
- Important information: -
- Material: Stainless steel
Glass
- Safety thermostat: Yes
- Properties: -
- Protection class: IPX4

Code-No. 103079
GTIN 4015613756837

Hot display unit "Deli Plus I"



- Size Clipboard central: W 630 x D 370 mm
- Size Clipboard top: W 630 x D 335 mm
- Size Clipboard bottom: W 630 x D 400 mm
- Power load: 1,1 kW | 230 V | 50 Hz
- Temperature range: 30 °C to 90 °C
- Content: 120 litre(s)
- Temperature control: Thermostatic
- Interior lighting: Yes
- Front pane: Rounded
Framed
- Type of door: Sliding door(s)

Code-No. 305053
GTIN 4015613503035

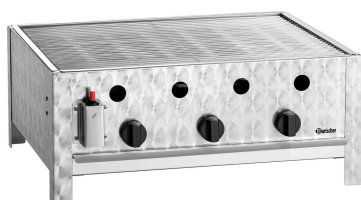
Cooling top unit Bartscher DeliCool II



- Size Clipboard top: W 630 x D 340 mm
- Size Clipboard bottom: W 630 x D 370 mm
- Power load: 0,16 kW | 230 V | 50 Hz
- Temperature range: 2 °C to 12 °C
- Coolant: R600a / 0,060 kg
- Content: 120 litre(s)
- Cooling: Circulating air with 2 fans
- Interior lighting: Yes
- Front pane: Rounded
Framed
- Type of door: Sliding door(s)

Code-No. 700202G
GTIN 4015613505558

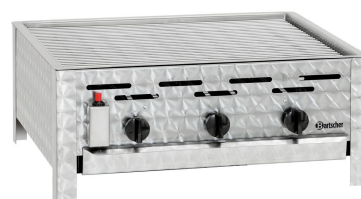
Gas table-top grill TB1000R



- Power: 10 kW
- Gas type: Liquid gas
- Ignition type: Piezo ignition
- Number of burners: 3
- Overheating protection: No
- Design: Grid
- Material: Stainless steel
- Size grid: B 600 x D 475 mm
- Material grid: Steel, galvanised
- Connection: 1/4"
- Control pressure: 50 mbar

Code-No. 1061633
GTIN 4015613685199

Combi table-top grill, gas, 3 burners



Professional commercial gas-combi tabletop roaster in stainless steel

- ✓ DVGW commercial safety tests, national and international
- ✓ Easy operation – can be ignited easily and safety with the Piezo magnetic

- Ignition type: Piezo ignition
- Number of burners: 3
- Overheating protection: Yes
- Design: Grid
Flame cover
Grease collection tray

Code-No. 1062303
GTIN 4015613527543

Cover hood Snackpoint 200



- Material thickness: 0.5 mm (580 g/m²)
- Colour: Grey
- Designed for: Snackpoint 200
- Model: Foldable
Integrated padding
Velcro on 4 sides
- Dimensions of cover hood in use: W 850 x D 630 x H 915 mm
- Properties: Complete coverage
Durable material
- Material: Polyester fabric
PVC-coated on both sides

Code-No. 107310
GTIN 4015613768700

Milk refrigerator KV8,1L



- Material inside: Plastic ABS
- Colour: Black
- Content: 8,1 litre(s)
- Size inside: W 160 x D 190 x H 280 mm
- Cooling: Compressor
Circulating air
- Temperature control: Electronic
In 1 °C steps
- Automatic defrosting function: Yes
- Drip water evaporation: Yes
- Thermostat: Yes

Code-No. 190082
GTIN 4015613779768

Oil and grease remover F1L



- Content: 6 x 1 litre
- Model: Liquid
- HACCP compliant: Yes
- Chlorine-free: Yes
- Phosphate-free: Yes
- Including: -
- Order quantity unit: 1 box (6 bottles)
- Designed for: Wipe-off work surfaces, stainless steel surfaces
Tiled walls and floors
Highly effective against deposits in coffee cans
Machines, appliances

Code-No. 173276
GTIN 4015613761176

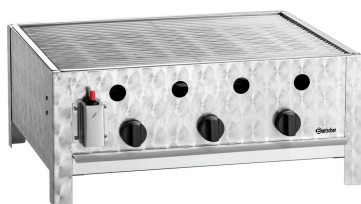
Milk refrigerator KV8,1L



- Material inside: Plastic ABS
- Colour: Black
- Content: 8,1 litre(s)
- Size inside: W 160 x D 190 x H 280 mm
- Cooling: Compressor
Circulating air
- Temperature range: 0 °C to 8 °C
- Temperature control: Electronic
In 1 °C steps
- Opening for milk hose: 2 openings, left and right on the appliance
Ø 7 mm

Code-No. 190085
GTIN 4015613803500

Gas table-top grill TB1000R



- Material grid: Stainless steel
- Size grid: B 600 x D 475 mm
- Power: 10 kW
- Gas type: Liquid gas
- Ignition type: Piezo ignition
- Connection: 1/4"
- Control pressure: 50 mbar
- Consumption: 728 g / h
- Number of burners: 3
- Overheating protection: No
- Design: Grid

Code-No. 1061533
GTIN 4015613806600