

„Economic“



100061

ENGLISH  
Translation  
of the original instruction manual



Read these instructions before using and keep them available at all times!

- 1. General information ..... 14**
  - 1.1 Information about the instruction manual ..... 14
  - 1.2 Key to symbols ..... 14
  - 1.3 Liability and Warrantees ..... 15
  - 1.4 Copyright protection ..... 15
  - 1.5 Declaration of conformity ..... 15
- 2. Safety ..... 16**
  - 2.1 General information ..... 16
  - 2.2 Safety instructions for use of the device ..... 16
  - 2.3 Intended use ..... 17
- 3. Transport, packaging and storage ..... 18**
  - 3.1 Delivery check ..... 18
  - 3.2 Packaging ..... 18
  - 3.3 Storage ..... 18
- 4. Technical data ..... 19**
  - 4.1 Overview of parts ..... 19
  - 4.2 Technical specification ..... 20
- 5. Installation and operation ..... 20**
  - 5.1 Safety instructions ..... 20
  - 5.2 Installation and connection ..... 21
  - 5.3 Operation ..... 22
- 6. Cleaning and maintenance ..... 23**
  - 6.1 Safety advice ..... 23
  - 6.2 Cleaning ..... 23
  - 6.3 Safety instructions for maintenance ..... 24
- 7. Waste disposal ..... 24**

Bartscher GmbH  
Franz-Kleine-Str. 28  
D-33154 Salzkotten  
Germany

phone: +49 (0) 5258 971-0  
fax: +49 (0) 5258 971-120

## 1. General information

### 1.1 Information about the instruction manual

This instruction manual contains information about the installation, operation and maintenance of the device and should be consulted as an important source of information and reference guide.

Awareness of the safety instructions and instructions for use in this manual will ensure the safe and correct use of the device.

In addition to the information given here, you should comply with any local Health and safety Controls and generally applicable safety regulations.

The instruction manual forms part of the product and should be kept near the device and easily accessible for anyone carrying out the installation, servicing, maintenance or cleaning.

### 1.2 Key to symbols

In this manual, symbols are used to highlight important safety instructions and any advice relating to the device. The instructions should be followed very carefully to avoid any risk of accident, personal injury or material damage.



#### **WARNING!**

*This symbol highlights hazards, which could lead to injury.*

*Please follow the instructions very carefully and proceed with particular attention in these cases.*



#### **WARNING! Electrical hazard!**

*This symbol draws attention to potential electrical hazards. If you do not follow the safety instructions, you may risk injury or death.*



#### **CAUTION!**

*This symbol highlights instructions, which should be followed to avoid any risk of damage, malfunctioning and/or breakdown of the device.*



#### **NOTE!**

*This symbol highlights tips and information, which have to be followed for an efficient and trouble-free operation of the device.*



#### **WARNING! Hot surface!**

*This symbol is a warning that the device surface is hot when in use. Ignoring this warning may result in burns!*

### 1.3 Liability and Warrantees

All the information and instructions in this manual take into account standard safety regulations, current levels of technical engineering as well as the expertise and experience we have developed over the years.

The instruction manual was translated with all due care and attention. However, we do not accept liability for any translation errors. The German version of this instruction manual is definitive.

If the delivery consists of a special model, the actual scope of delivery may differ from the descriptions and illustrations in this manual. This is also the case for special orders or when the device has been modified in line with new technology.



#### **NOTE!**

***Read this manual carefully and thoroughly before any operation of the device, and especially before turning it on!***

Manufacturer **is not liable** for any damages or faults caused by:

- violation of advice concerning operation and cleaning;
- use other than designed;
- alterations made by user;
- use of inadequate spare parts.

We reserve the right to make technical changes for purposes of developing and improving the useful properties.

### 1.4 Copyright protection

The instruction manual including any texts, drawings, images or other illustrations is copyright. No part of this publication may be reproduced, transmitted or used in any form or by any means without permission in writing from the manufacturer. Any person who commits any unauthorized act in relation to this publication shall be liable to claims for damages. All rights reserved.



#### **NOTE!**

***The contents, texts, drawings, pictures and any other illustrations are copyright and subject to other protection rights. Any person unlawfully using this publication is liable to criminal prosecution.***

### 1.5 Declaration of conformity

The device complies with the current standards and directives of the EU.

We certify this in the EC declaration of conformity.

If required we will be glad to send you the according declaration of conformity.

## 2. Safety

This section provides an overview of all important safety aspects.

In addition every chapter provides precise safety advice for the prevention of dangers which are highlighted by the use of the above mentioned symbols.

Furthermore, attention should be paid to all pictograms, markers and labels on the device, which must be kept in a permanent state of legibility.

By following all the important safety advice you gain an optimal protection against all hazards as well as the assurance of a safe and trouble-free operation.

### 2.1 General information

This device is designed in accordance with the presently applicable technological standards. However, the device can pose a danger if handled improperly and inappropriately.

Knowing the contents of the instruction manual as well as avoiding mistakes and thus operating this device safely and in a fault-free manner is very essential to protect yourselves from the hazards.

To prevent hazards and to ensure optimum efficiency, no modifications or alterations to the device that are not explicitly approved by the manufacturer may be undertaken.

This device may only be operated in technically proper and safe condition.

### 2.2 Safety instructions for use of the device

The specifications regarding the industrial safety are based on the Regulations of the European Union applicable at the time of manufacturing the device.

If the device is used commercially, the user is obliged to ensure that the said industrial safety measures concur with the state of the rules and regulations applicable at the time in question for the entire period of use of the device and to comply with the new specifications.

Outside the European Union, the industrial safety laws applicable at the place of installation of the device and the regional territorial provisions must be complied with.

Besides the industrial safety instructions in the instruction manual, the general safety and accident prevention regulations as well as environment protection regulations applicable for area of application of the device must be followed and complied with.



#### **CAUTION!**

- The device can be used by children **8 years and up**, as well as by people with disabilities and those with limited experience/knowledge as long as they are under supervision or have been instructed on proper use of the device and its possible dangers.

- **Children** should not play with the device.
- Cleaning and **maintenance cannot be performed by children** younger than 8 years old and must be done under supervision.
- **Children under the age of 8 years old** must be kept away from the device and its power cord.
- Please keep these instructions and give them to future owners of the device.
- All people using the device should follow the instructions and tips contained in these instructions.
- Only use the device indoors.

## 2.3 Intended use

Safe operation is only guaranteed when using the device for its intended purpose.

Any technical interventions, as well as assembly and maintenance are to be made by a qualified customer service only.

The device is intended for home use or in similar places such as:

- in kitchens for store or office employees or in other service locations;
- in suburban properties;
- by guests of hotels, motels and other places of accommodation;
- in Bed & Breakfasts.

**The soup kettle** is intended only for **maintaining the temperature of** soup, goulash, sausages.

**Do not** use the **soup kettle** for:

- preparing soup;
- preparing other dishes and beverages;
- heating flammable, dangerous or easily evaporating liquids or other such materials.



### **CAUTION!**

***Any use going beyond the intended purpose and/or any different use of the device is forbidden and is not considered as conventional.***

***Any claims against the manufacturer or his authorized representative as a consequence of experiencing damages resulting from unconventional use are impossible.***

***The operator is liable for all damages resulting from inappropriate use.***

## 3. Transport, packaging and storage

### 3.1 Delivery check

Please check the delivery upon completeness and transport damage immediately after receipt. In case of visible damage do not accept or accept the delivery with reservation only.

Note the extent of damage on the carrier's bill of delivery. Trigger off the complaint.

Hidden damages should be reclaimed immediately after notice, as claims for damages can only be asserted within the effective period for complaints.

### 3.2 Packaging

Please do not throw away the covering carton of your device as it might be useful for storage purposes, when moving or, in case of damages, when the device must be sent back to a repair center. The outer and inner packing material should be removed completely from the device before installation.



#### **NOTE!**

***If you liked to dispose the packing, consider the regulations applicable in your country. Supply re-usable packing materials to the recycling.***

Please inspect the device upon completeness. In case any part is missing please contact our customer service center immediately.

### 3.3 Storage

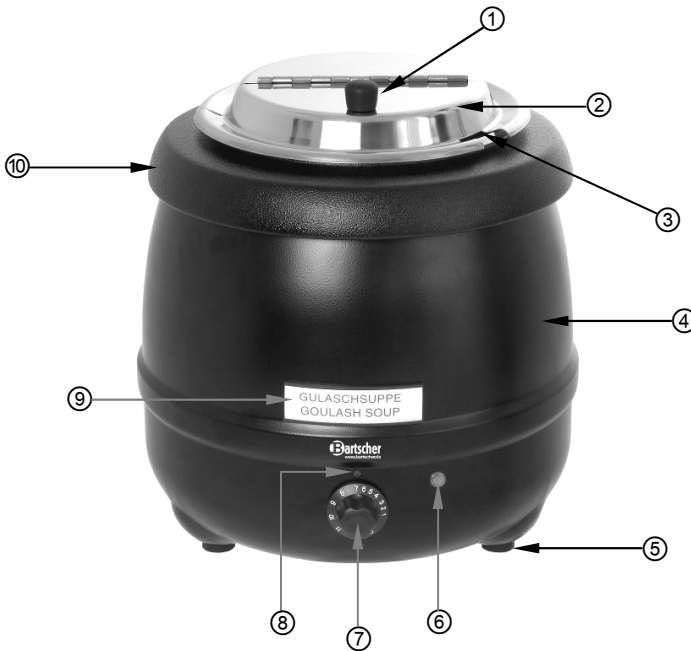
Keep the package closed until installation and under consideration of the outside indicated positioning- and storage markings.

Packages should be stored under consideration of the following:

- Do not store outdoors.
- Keep it dry and dust-free.
- Do not expose it to aggressive media.
- Do not expose it to direct sunlight.
- Avoid mechanical shocks and vibration.
- In case of longer storage (> 3 months) make sure you check the state of the packaging and the parts regularly.  
If required refresh or renew.

## 4. Technical data

### 4.1 Overview of parts



- ① Lid handle
- ② Rotary and foldaway lid
- ③ Ladle cut-out
- ④ Outer pot
- ⑤ Legs (3)
- ⑥ Control light (green)
- ⑦ Energy control
- ⑧ Temperature indicator
- ⑨ Food label
- ⑩ Carrying ring



## 4.2 Technical specification

<b>Name</b>	<b>Soup kettle „Economic“</b>
Code-no.:	<b>100061</b>
Material:	Outer pot: black, coated sheet steel inner pot, lid: stainless steel
Power:	400 W / 230 V~ 50 Hz
Capacity:	approx. 9.0 litres
Temperature range:	48 °C - 94 °C
Dimensions:	height 360 mm, Ø 330 mm
Weight:	4.1 kg
Accessories:	8 magnetic plates with food names

We reserve the right to make technical changes!

## 5. Installation and operation

### 5.1 Safety instructions



**WARNING! Risk of electric shock!**

***The device must only be connected to a properly installed single socket with protective contact.***

***Never remove the power cable by pulling the cable itself; always grab the plug housing.***

- Never allow the power cable to come into contact with heat sources or sharp edges. The power cable should not hang over the side of the working surface. Ensure that no one can step on or trip over the cable.
- The power cable must not be folded, bent or tangled, and must always remain fully unrolled.
- Never place the device or other objects on the power cable.
- Do not lay the cable over carpets or heat insulations. Do not cover the cable. Keep away the cable from operating range and do not dunk it into water.
- Do not use the device in case it does not function properly, has been damaged or dropped.
- Do not use any accessory or spare parts that have not been recommended by the manufacturer. These can be dangerous for the user or lead to damages of the device or personal injury, and further, the warranty expires.

- Do not move or tilt the device when in operation.
- **Never** leave the device unattended when in operation.
- **Never** touch the plug with wet or moist hands.
- Never operate the device with moist hands or while standing on wet floor.
- The device is powered until it is disconnected from the supply system.
- In case of fire remove the plug from the socket or disconnect the device from the power supply before the fire extinguishing activities. **Caution:** Do not sprinkle the device with water while it is still powered: **Electric shock hazard!**

## 5.2 Installation and connection

- Unpack the device and dispose of all packaging material.
- Put the device on a level, stable, clean and dry surface, resistant to high temperature.
- The device must be positioned in such way that it is protected from sprinkled water and in appropriate distance from the edges of the operational surface.
- **Never** put the device on a flammable surface.
- **Never** place the device in humid or wet environment.
- Do not place the device near open fireplaces, electric ovens, heating ovens or other heat sources.
- Ensure the device is not placed near any flammable materials. **Fire hazard!**
- Ensure a safe distance is maintained from all walls, shelves, etc. for proper circulation of warm air emitted by the device.



**WARNING! Hazard via electrical current!**

***The device can cause injuries due to improper installation!***

***Before installation the local power grid specification should be compared with that of the device (see type label).***

***Connect the device only in case of compliance!***

***Take note of the security advice!***

- The electrical circuit of the socket must be secured to at least 16A. Only connect the device to a wall outlet; do not use any extension cords or power strips.
- Place the device so that the plug is easily accessible so as to quickly disconnect the device if the need arises.

## 5.3 Operation

The **soup kettle** consists of a heated outer pot with thermostatic control, a removable stainless steel inner pot and a carrying ring, which is set on top of the outer pot. The device is provided with a rotary and foldaway stainless steel lid with a ladle cut-out and a heat-insulated handle.

The lid locks into three different positions:

<b>closed:</b>	for quick, economic heating
<b>fold-up:</b>	for serving of foods
<b>opened sideways:</b>	for filling in foods

- Before using the device, remove the lid and carrying ring, remove the inner pot and wash all parts thoroughly (see **6.2 Cleaning**).
- The soup kettle functions like a water bath. The temperature of food is maintained by a coat of water heated electrically.
- Pour **0.6 litres of water** into the outer pot (lower mark). Do not pour **more than 0.6 litres of water** into the outer pot, as otherwise it can spill over when the inner pot is placed inside.



### NOTE!

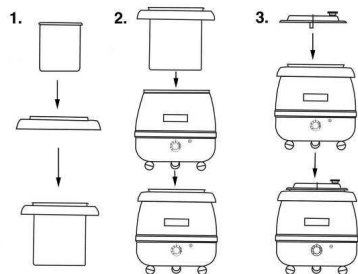
*To reduce heating time, use warm water.  
Cold water extends heating time.*



### CAUTION!

*Do not turn on or use the soup kettle when the outer pot is empty/dry.*

- Fill the inner pot with the desired food product and place it through the center of the carrying ring.
- Hold the carrying ring and place the inner pot inside the outer pot.
- Place the lid on the soup kettle.
- Connect the device to a single grounded outlet.



- Set the appropriate temperature for the food product.

The adjustable temperature dial (1-12) ensures the contents of the kettle are heated evenly. The control light shines during the heating phase.

- Heating time depends on the amount and temperature of food and temperature of water in the outer pot.

- Warm food can be removed from the soup kettle and served as needed.
- After removing food, close the lid to avoid heat loss.
- When finished using the device, turn the energy control to the position marked "0" and unplug the device from its socket.
- The device is equipped with a function preventing it from **operating when dry**. If the device is accidentally turned on without water or with too little water, the safety mechanism will be activated and the device will be automatically shut off. In this case, turn the device off and wait for it to cool. After cooling, fresh water may be poured in and the device can be used normally.

## 6. Cleaning and maintenance

### 6.1 Safety advice

- Before beginning with repair or cleaning works make sure the device has been disconnected from power supply and has cooled down.
- Do not use any acid agents and make sure no water ingresses the device.
- To protect yourself from electric shock, **never** immerse the device, its cables and the plug in water or other liquids.



#### **CAUTION!**

***The device is not suited for direct washing via water jets.***

***Therefore, you must not use any kind of pressure water jet for cleaning the device!***

### 6.2 Cleaning

- **Attention!** During washing and operation of the device do not immerse its electric parts in water or other liquids. Never put the device under running water.
- After each use, wash the inner and outer pots and the carrying ring, as food, spices and salt are aggressive and may damage the device.
- Set the temperature dial to "0" and remove the device's plug from its socket. Wait for the device to cool.
- Remove the inner pot. Wash the lid, carrying ring and inner pot with a soft cloth and mild cleaning agent.
- Only empty the outer pot when the remaining water has cooled, otherwise there is a **risk of burns!**
- Wipe the outer pot on the inside and outside with a soft, moist cloth.
- Next, dry all washed parts thoroughly.
- If the device is to be washed, transported or remain unused for a longer period of time, empty it.

- Always use a soft cloth and **never** use coarse cleaning agents that could damage or scratch the surfaces of the device.
- After cleaning dry and polish the surface with dry cloth.

## 6.3 Safety instructions for maintenance

- Inspect the power cable regularly for damage. Never use the device if the cable is damaged. If the power cable is damaged, have an authorised service center or qualified electrician replace it.
- In case of damage or malfunction, please contact your stockist or our customer service centre.
- Only a qualified technician and using original spare parts and accessories should carry out repairs and maintenance of the device. **Do not attempt to repair the device yourself.**

## 7. Waste disposal

### Discarding old devices

At the end of its service life the discarded device has to be disposed in accordance with the national regulations. It is advisable to contact a company which is specialized in waste disposal, or just contact the local disposal service in your community.



#### **WARNING!**

***To exclude any abuse and the dangers involved make the waste device unfit for use before disposal. For that purpose disconnect device from mains supply and remove mains connection cable from the device.***



#### **NOTE!**



***For the disposal of the device please consider and act according to the national and local rules and regulations.***

Bartscher GmbH  
Franz-Kleine-Str. 28  
D-33154 Salzkotten  
Germany

phone: +49 (0) 5258 971-0  
fax: +49 (0) 5258 971-120